

Light Shadow Dots - Single Spot Module. Set of 1 Spot

Designed by FLOS Architectural, 2019

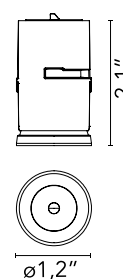


LED - Power LED - 1.8W - 155lm - 3000K - CRI> 90 - Beam° 21

LED lighting module, with low glare, to be inserted in the recessed frames (not included), installation through a bayonet system with interchangeable spots. Available in one-light versions and groups of two and four lights. Driver not included, the driver has to be directly connected to the embedding frames.

Are you a professional and your project needs consulting and support?

[BOOK AN APPOINTMENT](#)



Main specifications

Mounting	Ceiling recessed
Environments	Indoor dry location
Light Source Type	LED
Light sources included	Yes
LED type	Power LED
Lamp category	LED
Number of lamps	1
Power (W)	1.8
Source flux (lm)	285
System flux (lm)	155

Physical

Color	Copper
Orientation	Fixed
Net weight (lb)	0.11
Gross weight (lb)	0.19
Package height (in)	0.29
Package volume (in)	0
IP internal	20

Download

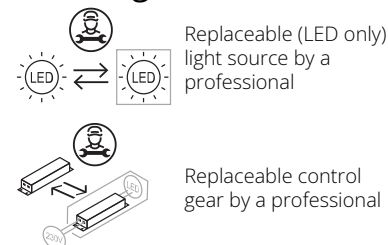
Family spec sheet	ZIP
Mounting instructions	PDF
Mounting instructions	PDF

Photometric Files

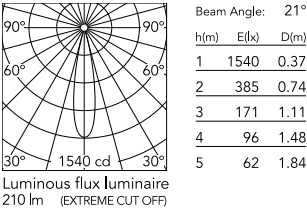
LDT / IES	ZIP
-----------	---------------------



Ecodesign and Energy Labelling



Schematic light drawing



Photometric

Lighting type	Direct
Light distribution	Symmetric
CCT (K)	3000
CRI>	90
LED Life / Failure Ratio	L80B50>50.000h (Tc=85°C)
Beam angle C0-180 (°)	21
Beam angle C90-270 (°)	21
UGR _L	<10

Electrical

Forward voltage (V)	6
LED current (mA)	600
Driver	Remote
Dimmable	Yes
Dimming interface	Remote Dimmable (Dimmer Not Included)

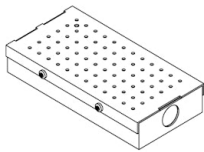
Accessories & Power Supply



REQUIRED
Frame

08.0580.00.9S

Accessory Pre-installation frame,
1L



REQUIRED
Power supply

Electrical

SP12W600MA-10V-T01

Splice Box UL 7"x3-5/8"x1-1/4",
UL. With Eldoled Eco Drive 12W
series Driver Programmed to
600mA, 0-10V Dim 120-277V



REQUIRED
Frame

08.0581.00.9S

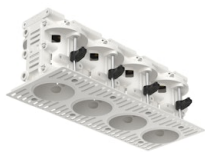
Accessory Pre-installation frame,
2 Lights Space 43 mm - 1.69" on
center



REQUIRED
Frame

08.0583.00.9S

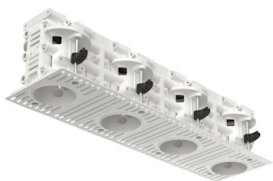
Accessory Pre-installation frame,
2 Lights Space 70 mm - 2.76" on
center



REQUIRED
Frame

08.0582.00.9S

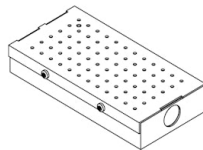
Accessory Pre-installation frame,
4 Lights Space 43 mm - 1.69" on
center



REQUIRED
Frame

08.0584.00.9S

Accessory Pre-installation frame,
4 Lights Space 70 mm - 2.76" on
center



REQUIRED
Power supply

SP40W600MA-10V-D01

Splice Box 7"x3-5/8"x1-1/4",
600mA, 40W, 0-10V Dimmable,
120-277V



REQUIRED
Frame

08.0661.14.9S

ACC FRAME Trim BLACK Light
Shadow DOTS UL



REQUIRED
Frame

08.0661.40.9S

ACC FRAME Trim WHITE Light
Shadow Dots

OPTIONAL
Frame

Installation

08.0586.00

Accessory Pre-installation frame,
70 mm - 2.76" spacer