

# FLOS

08.8701.14 Black

## Light Cut Mini Aluminium Profile 1 unit/1000 mm. Perimetral Installation

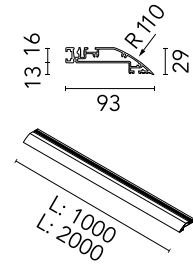
Designed by FLOS Architectural, 2013



Structural system in aluminium to integrate in plasterboard ceilings. It allows incorporation of projectors. Perimetral installation consists of 1 or 2 meter profiles, inside and outside corners. It is possible to cut the profiles to any size.

Are you a professional and your project needs consulting and support?

[BOOK AN APPOINTMENT](#)



### Main specifications

Mounting	Ceiling recessed
Environments	Indoor dry location

### Physical

Colour	Black
Trim	No
Length (mm)	1000
Net weight (kg)	1.22

### Download

[Mounting instructions](#)



### Electrical

Emergency No

### Notes

Can only be installed in 12.5 mm thick plaster-board.

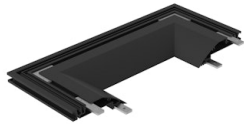
## Accessories & Power Supply



### REQUIRED Profile

08.8705.14

Light Cut Mini Endcap. Channel  
70 Installation



### REQUIRED Profile

08.8706.14

Light Cut Mini Endcap. Channel  
140 Installation



### REQUIRED Corner

08.8707.14

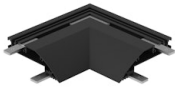
Light Cut Mini Corner. Channel 70  
Installation



### REQUIRED Corner

08.8708.14

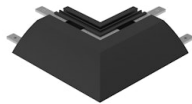
Light Cut Mini Corner. Channel  
140 Installation



### REQUIRED Corner

08.8709.14

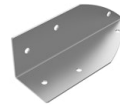
Light Cut Mini Corner Inside.  
Perimetral Installation



### REQUIRED Corner

08.8710.14

Light Cut Mini Corner Outside.  
Perimetral Installation



### REQUIRED Corner

08.8711.00

Light Cut Mini accessory for  
vertical corner. Perimetral  
Installation