

FLOS

03.0803.40A White

Johnny 120 Light Source

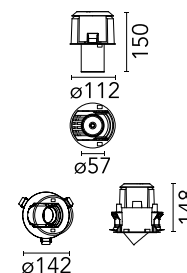
Designed by FLOS Architectural, 2017



Recessed luminaire with LED light source. Power supply not included. One driver is needed per each light source.

Are you a professional and your project needs consulting and support?

[BOOK AN APPOINTMENT](#)



Main specifications

| | |
|------------------------|---------------------|
| Mounting | Ceiling recessed |
| Environments | Indoor dry location |
| Light source type | LED |
| Light sources included | Yes |
| LED type | LED array |
| Lamp category | LED |
| Number of lamps | 1 |
| Power (W) | 18 |
| System power (W) | 20 |
| Source flux (lm) | 2049 |
| Lumen Output (lm) | 1544 |

Physical

| | |
|--------------------------|------------|
| Colour | White |
| Trim | No |
| Orientation | Adjustable |
| Rotation (°) | 360 |
| Longitudinal tilting (°) | 40 |
| Transversal tilting (°) | 40 |
| Net weight (kg) | 0.5 |
| IP internal | 20 |

Download

Mounting instructions [↓ PDF](#)

Photometric Files

LDT / IES [↓ ZIP](#)

Technical Drawings

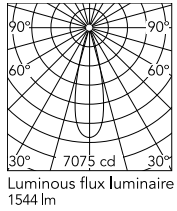
2D [↓ ZIP](#)

3D [↓ ZIP](#)

[Bim](#) [↓ ZIP](#)



Schematic light drawing



Beam Angle: 27°

| h(m) | E(lx) | D(m) |
|------|-------|------|
| 1 | 7075 | 0.49 |
| 2 | 1769 | 0.98 |
| 3 | 786 | 1.47 |
| 4 | 442 | 1.96 |
| 5 | 283 | 2.44 |

Photometric

| | |
|------------------------|-----------|
| Lighting type | Direct |
| Light distribution | Symmetric |
| CCT (K) | 2700 |
| CRI> | 90 |
| Beam angle C0-180 (°) | 27 |
| Beam angle C90-270 (°) | 27 |
| Extreme cut off | No |
| UGR _L | <10 |

Electrical

| | |
|---------------------|--|
| Insulation class | III |
| Frequency (Hz) | 50/60 |
| Forward voltage (V) | 36 |
| LED current (mA) | 500 |
| Power supply | Remote excluded |
| Dimmable | Yes |
| Power supply type | Non Dimmable, Dimmable Casambi, Mains Cut Dimming, Dimmable DALI 2, Dimmable 1-10V, Dimmable DALI 1 |

Notes

With accessories set maximum current at 450mA

Accessories & Power Supply



REQUIRED
Frame

Installation

08.0505.00

Johnny 120 Round 1L – Recessed
Universal Frame



REQUIRED
Frame

Installation

08.0500.00

Johnny 120 Square 1L – Recessed
Universal Frame



REQUIRED
Frame

Installation

08.0501.00

Johnny 120 Square 2L – Recessed
Universal Frame



REQUIRED
Frame

Installation

08.0506.14

Johnny 120 Semi-Recessed 1L
Square Frame



REQUIRED
Frame

Installation

08.0556.CE

Johnny 120 Semi-Recessed 1L
Square Frame



REQUIRED
Frame

Installation

08.0557.40

Johnny 120 Semi-Recessed 2L
Square Frame



REQUIRED
Frame

Installation

08.0555.00

Johnny 120 Round 1L – Recessed
Universal Frame

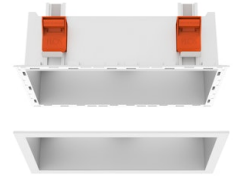


REQUIRED
Frame

Installation

08.0550.00

Johnny 120 Square 1L – Recessed
Universal Frame



REQUIRED
Frame

Installation

08.0506.40

Johnny 120 Semi-Recessed 1L
Square Frame

REQUIRED
Frame

Installation

08.0557.14

Johnny 120 Semi-Recessed 2L
Square Frame

REQUIRED
Power supply

Electrical

60.9188

Continuous current power supply
of 13-20W, 110*/240V - 50/60Hz
with current selected through
adjustable 200 mA - 13W / 300
mA - 15W / 350 mA - 18W / 400 /
450 / 500 / 550 / 600 / 650 / 700 /
750 / 800 / 850 / 900 mA - 20W.
switch. 0/1-10V or push.

REQUIRED
Frame

Installation

08.0551.00

Johnny 120 Square 2L - Recessed
Universal Frame



REQUIRED
Frame

Installation

08.0556.40

Johnny 120 Semi-Recessed 1L
Square Frame

REQUIRED
Frame

Installation

08.0556.14

Johnny 120 Semi-Recessed 1L
Square Frame

REQUIRED
Frame

Installation

08.0506.CE

Johnny 120 Semi-Recessed 1L
Square Frame

REQUIRED
Power supply

Electrical

60.9222

Continuous current power supply
of 12-20W, 110/240V - 50/60Hz
with power current selected
through adjustable 250mA - 12W
/ 350mA - 17W / 400mA - 19W /
450 / 500/ 550 / 600 / 700mA -
20W regulable Dali 1 & Dali 2



REQUIRED
Frame

Installation

08.0507.14

Johnny 120 Semi-Recessed 2L
Square Frame

REQUIRED
Power supply

Electrical

60.9467

Mains dimming 20W Constant
current power supply, AC phase-
cut adjustable, trailing & leading
edge dimming, 220/240V -
50/60Hz, with dip-switch
programmable power supply
current. Output current: 900mA -
20W / 850mA - 20W / 800mA -
20W / 750mA - 20W / 70...

REQUIRED
Frame

Installation

08.0507.40

Johnny 120 Semi-Recessed 2L
Square Frame

REQUIRED
Frame

Installation

08.0507.CE

Johnny 120 Semi-Recessed 2L
Square Frame



REQUIRED
Power supply

Electrical

60.9207

Casambi continuous current
power supply, dimmable
220/240V - 50/60Hz, 300mA -
16W / 350mA - 18,5W / 400mA -
21,5W / 450 mA - 24W / 500mA -
27W / 600mA - 32W / 650 mA -
35W / 700 mA - 36W / 750 / 800
/900 / 1000 / 1050 / 1200 mA -
38W.

REQUIRED
Frame

Installation

08.0557.CE

Johnny 120 Semi-Recessed 2L
Square Frame

REQUIRED
Power supply

Electrical

60.9160

Non dimmable continuous
current power supply of
220/240V - 50/60Hz with power
current selected through
adjustable with switch 200 mA -
8,5W / 250mA - 11W / 300 mA -
13W / 350 mA - 15W / 400 mA -
17,5W / 450 mA - 19,5W / 500 mA
- 22W

OPTIONAL
Accessory

Optical

08.0526.00

Snoot shielding cone



OPTIONAL
Accessory

Optical

08.0526.40

Snoot shielding cone

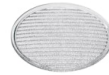


OPTIONAL
Accessory

Optical

08.0526.BW

Snoot shielding cone



OPTIONAL
Accessory

Optical

08.8431.00

Elliptical lens



OPTIONAL
Accessory

Optical

08.8432.00

Flood lens



OPTIONAL
Accessory

Optical

08.8428.00

Honeycomb