

# FLOS

03.0744.14 Black

## Johnny 120 Light Source

Designed by FLOS Architectural, 2016



Recessed luminaire with LED light source. Power supply not included. One driver is needed per each light source.

Are you a professional and your project needs consulting and support?

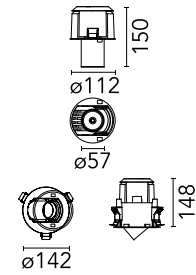
BOOK AN APPOINTMENT

### Main specifications

Mounting	Ceiling recessed
Environments	Indoor dry location
Light source type	LED
Light sources included	Yes
LED type	LED array
Lamp category	LED
Number of lamps	1
Power (W)	18
Source flux (lm)	1885.5
Lumen Output (lm)	1531

### Physical

Colour	Black
Trim	No
Orientation	Adjustable
Longitudinal tilting (°)	40
Transversal tilting (°)	40
Recessed depth (mm)	160
Net weight (kg)	0.56
IP internal	20
IP external	20



### Download

Mounting instructions [↓ PDF](#)

### Photometric Files

LDT / IES [↓ ZIP](#)

### Technical Drawings

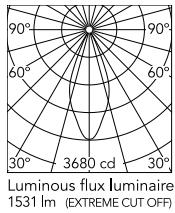
2D [↓ ZIP](#)

3D [↓ ZIP](#)

[Bim](#) [↓ ZIP](#)



## Schematic light drawing



Beam Angle: 41°

h(m)	E(lx)	D(m)
1	3680	0.75
2	920	1.50
3	409	2.25
4	230	3.00
5	147	3.75

### Photometric

Lighting type	Direct
Light distribution	Symmetric
CCT (K)	3000
CRI>	90
Beam angle C0-180 (°)	41
Beam angle C90-270 (°)	41
UGR <sub>L</sub>	<16

### Electrical

Insulation class	III
Frequency (Hz)	50/60
Forward voltage (V)	36
Power supply	Remote excluded
Dimmable	Yes
Power supply type	Non Dimmable, Dimmable Casambi, Mains Cut Dimming, Dimmable DALI 2, Dimmable 1-10V, Dimmable DALI 1
Emergency	No

### Notes

Unique reference for Trim or No Trim recessed installation. 08.0550.00=includes white frame to complete Trim finishing. 08.0500.00=includes optional white and black frames to complete Trim finishing.

## Accessories & Power Supply



REQUIRED  
Frame

Installation

08.0505.00

Johnny 120 Round 1L – Recessed  
Universal Frame



REQUIRED  
Frame

Installation

08.0500.00

Johnny 120 Square 1L – Recessed  
Universal Frame



REQUIRED  
Frame

Installation

08.0556.40

Johnny 120 Semi-Recessed 1L  
Square Frame



REQUIRED  
Frame

Installation

08.0556.CE

Johnny 120 Semi-Recessed 1L  
Square Frame



REQUIRED  
Power supply

Electrical

60.9467

Mains dimming 20W Constant  
current power supply, AC phase-  
cut adjustable, trailing & leading  
edge dimming, 220/240V -  
50/60Hz, with dip-switch  
programmable power supply  
current. Output current: 900mA -  
20W / 850mA - 20W / 800mA -  
20W / 750mA - 20W / 70...



REQUIRED  
Frame

Installation

08.0557.40

Johnny 120 Semi-Recessed 2L  
Square Frame



REQUIRED  
Frame

Installation

08.0501.00

Johnny 120 Square 2L – Recessed  
Universal Frame



REQUIRED  
Frame

Installation

08.0506.14

Johnny 120 Semi-Recessed 1L  
Square Frame



REQUIRED  
Frame

Installation

08.0506.40

Johnny 120 Semi-Recessed 1L  
Square Frame



REQUIRED  
Frame

Installation

08.0506.CE

Johnny 120 Semi-Recessed 1L  
Square Frame



REQUIRED  
Frame

Installation

08.0507.14

Johnny 120 Semi-Recessed 2L  
Square Frame



REQUIRED  
Frame

Installation

08.0550.00

Johnny 120 Square 1L - Recessed  
Universal Frame



REQUIRED  
Power supply

Electrical

60.9160

Non dimmable continuous  
current power supply of  
220/240V - 50/60Hz with power  
current selected through  
adjustable with switch 200 mA -  
8,5W / 250mA - 11W / 300 mA -  
13W / 350 mA - 15W / 400 mA -  
17,5W / 450 mA - 19,5W / 500 mA  
- 22W



REQUIRED  
Power supply

Electrical

60.9222

Continuous current power supply  
of 12-20W, 110/240V - 50/60Hz  
with power current selected  
through adjustable 250mA - 12W  
/ 350mA - 17W / 400mA - 19W /  
450 / 500/ 550 / 600 / 700mA -  
20W regulable Dali 1 & Dali 2



REQUIRED  
Frame

Installation

08.0556.14

Johnny 120 Semi-Recessed 1L  
Square Frame



REQUIRED  
Frame

Installation

08.0557.CE

Johnny 120 Semi-Recessed 2L  
Square Frame



REQUIRED  
Frame

Installation

08.0507.40

Johnny 120 Semi-Recessed 2L  
Square Frame

REQUIRED  
Frame

Installation

08.0507.CE

Johnny 120 Semi-Recessed 2L  
Square Frame

REQUIRED  
Frame

Installation

08.0555.00

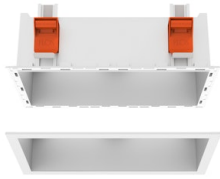
Johnny 120 Round 1L – Recessed  
Universal Frame

REQUIRED  
Power supply

Electrical

60.9207

Casambi continuous current  
power supply, dimmable  
220/240V - 50/60Hz, 300mA -  
16W / 350mA - 18,5W / 400mA -  
21,5W / 450 mA - 24W / 500mA -  
27W / 600mA - 32W / 650 mA -  
35W / 700 mA - 36W /750 /800  
/900 /1000 /1050 /1200 mA -  
38W.



REQUIRED  
Frame

Installation

08.0551.00

Johnny 120 Square 2L – Recessed  
Universal Frame

REQUIRED  
Frame

Installation

08.0557.14

Johnny 120 Semi-Recessed 2L  
Square Frame

REQUIRED  
Power supply

Electrical

60.9188

Continuous current power supply  
of 13-20W, 110\*/240V - 50/60Hz  
with current selected through  
adjustable 200 mA - 13W / 300  
mA - 15W / 350 mA - 18W / 400 /  
450 / 500 / 550 / 600 / 650 / 700 /  
750 / 800 / 850 / 900 mA - 20W.  
switch. 0/1-10V or push.

OPTIONAL  
Accessory

Optical

08.0526.BW

Snoot shielding cone



OPTIONAL  
Accessory

Optical

08.8428.00

Honeycomb



OPTIONAL  
Accessory

Optical

08.8431.00

Elliptical lens



OPTIONAL  
Accessory

Optical

08.0526.00

Snoot shielding cone



OPTIONAL  
Accessory

Optical

08.8432.00

Flood lens



OPTIONAL  
Accessory

Optical

08.0526.40

Snoot shielding cone