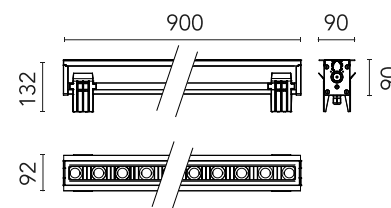


## Ingraze Fixed Frame L 900

Designed by FLOS Outdoor, 2023

1929lm - 2200K - CRI> 80 - Beam° 12

High-power LED source included and rear lenses. 1-10V or DALI on-off and dimmable 220-240V power supply. Compulsory installation box to be ordered separately. Pre-wired with H2O Stop quick connectors, lug/socket included. ACT (Anti-Corrosion Treatment) upon request.



Are you a professional and your project needs consulting and support?

BOOK AN APPOINTMENT

### Main specifications

|                   |                      |
|-------------------|----------------------|
| EAN               | 8054793269580        |
| Mounting          | In-ground            |
| Environments      | Outdoor wet location |
| LED type          | Power LED            |
| System power (W)  | 26                   |
| Lumen Output (lm) | 1929                 |

### Physical

|                     |            |
|---------------------|------------|
| Colour              | Anthracite |
| Orientation         | Fixed      |
| Length (mm)         | 900        |
| Net weight (kg)     | 5.13       |
| Package height (mm) | 230        |
| Package width (mm)  | 170        |
| Package length (mm) | 972        |
| Package volume (m3) | 0.04       |
| IP internal         | 66         |
| IP external         | 67         |
| Static load (kg)    | 2500.000   |
| Drive Over          | Yes        |

### Download

Mounting instructions [ZIP](#)

### Photometric Files

LDT / IES [ZIP](#)

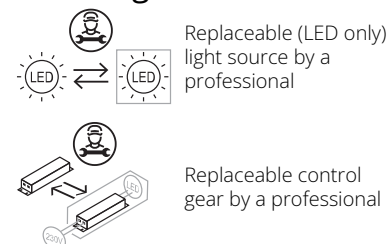
### Technical Drawings

2D [ZIP](#)

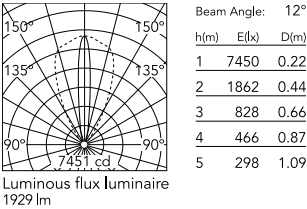
3D [ZIP](#)



### Ecodesign and Energy Labelling



Schematic light drawing



Photometric

|                        |            |
|------------------------|------------|
| Lighting type          | Direct     |
| Light distribution     | Asymmetric |
| CCT (K)                | 2200       |
| CRI>                   | 80         |
| Beam angle C0-180 (°)  | 12         |
| Beam angle C90-270 (°) | 50         |

Electrical

|                    |              |
|--------------------|--------------|
| Insulation class   | I            |
| Frequency (Hz)     | 50/60        |
| Main voltage (Vac) | 220-240      |
| Power supply       | Integrated   |
| Power supply type  | Non Dimmable |

Accessories & Power Supply

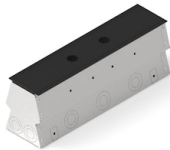


REQUIRED  
Accessory

Electrical

F990C083000

4-pin connector kit with detachable socket + EU plug.



REQUIRED  
Frame

Installation

F017Z030000

Framed installation box for single flush installations L 900



REQUIRED  
Frame

Installation

F017Z130000

Framed/frameless installation box for single installations L 900



REQUIRED  
Accessory

Electrical

F990C082000

5-pin connector kit with detachable socket + EU plug.



OPTIONAL  
Frame

Installation

F017Z230000

Framed flush continuous line module L 900



OPTIONAL  
Accessory

F990C030000

4 way junction box 5 poles IP68 (6-14 mm cables)



OPTIONAL  
Accessory

F990C00A000

2 way terminal block 4 poles IP68 H20 stop. (ø5,5÷12mm cable)



OPTIONAL  
Accessory

F990C010000

3/4 way terminal block 4 poles IP68 H20 stop. (ø5,5÷12mm cable)



OPTIONAL  
Frame

Installation

F017Z630000

Complete framed anti-theft installation box for single flush installations L 900



OPTIONAL  
Accessory

F990C080000

Connector kit 5-pole flying socket + EU plug IP68.



OPTIONAL  
Frame

Installation

F017Z560006

Frameless anti-theft bracket kit.



OPTIONAL  
Frame

Installation

F017Z730000

Framed/frameless anti-theft installation box for single installations L 900



OPTIONAL  
Frame

Installation

F017Z231000

Framed/frameless continuous line module L 900



OPTIONAL  
Accessory

Electrical

F990C081000

4-pin connector kit with detachable socket + IP68 EU plug.



OPTIONAL  
Frame

Installation

F017Z490000

Standard end-plate cover kit.



OPTIONAL  
Frame

Installation

F017Z550006

Framed anti-theft bracket kit.



OPTIONAL  
Frame

Installation

F017Z560033

Frameless anti-theft bracket kit.



OPTIONAL  
Frame

Installation

F017Z550033

Framed anti-theft bracket kit.



OPTIONAL  
Frame

Installation

F017Z530000

Standard connecting plate kit.



OPTIONAL  
Frame

Installation

F017Z531000

Anti-theft connecting plate kit.