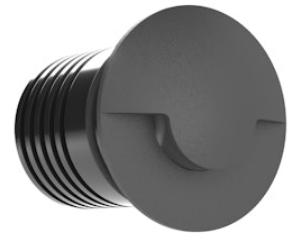


FLOS

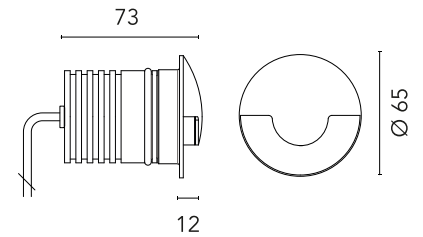
FA51828233 Anthracite

Gobi 65 Wall Path

Designed by FLOS Outdoor, 2013



LED source included. 24V dc remote electric power supply to be ordered separately. Requires a junction box to be ordered separately. The luminaire is equipped with a protruding, 200 mm cable with an integrated H2O STOP connection system and a wiring kit with crimp connectors and adhesive heat-shrink tubing guaranteeing the water tightness of the connection. Adjustable light intensity version available upon request.



Are you a professional and your project needs consulting and support?

[BOOK AN APPOINTMENT](#)

Main specifications

| | |
|------------------------|---------------|
| EAN | 8054793640174 |
| Mounting | Wall |
| Light source type | LED |
| Light sources included | Yes |
| LED type | Power LED |
| Number of lamps | 1 |
| Power (W) | 2 |
| System power (W) | 3.4 |
| Source flux (lm) | 169 |
| Lumen Output (lm) | 47 |

Physical

| | |
|---------------------|------------|
| Colour | Anthracite |
| Orientation | Fixed |
| Net weight (kg) | 0.38 |
| Package height (mm) | 134 |
| Package width (mm) | 70 |
| Package length (mm) | 83 |
| IP internal | 66 |

Download

[Mounting instructions](#)  ZIP

Photometric Files

[LDT / IES](#)  ZIP

Technical Drawings

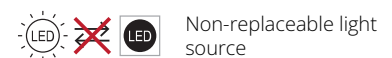
[2D](#)  ZIP

[3D](#)  ZIP

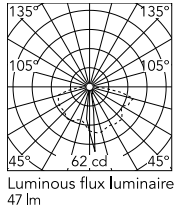


Ecodesign and Energy Labelling

This product contains a light source of energy efficiency class F



Schematic light drawing



Photometric

| | |
|--------------------|------------|
| Lighting type | Direct |
| Light distribution | Asymmetric |
| CCT (K) | 2700 |
| CRI> | 80 |
| Extreme cut off | No |

Electrical

| | |
|--------------------|-----------------|
| Insulation class | III |
| Main voltage (Vac) | 24 |
| Power supply | Remote excluded |
| Dimmable | No |
| Power supply type | Non Dimmable |
| Dimming interface | Not Dimmable |
| Emergency | No |

Notes

Please check with your referent person in our Front Office if a code modification is needed to meet the required certification compliance!

Dimmable version on request

Accessories & Power Supply



REQUIRED
Accessory

F004Z0K0000

Box for installation



OPTIONAL
Accessory

F990C050000

2 way terminal block 2 poles IP68
H2O stop. (Ø4÷6,9mm cable)



OPTIONAL
Power supply

F990B28A000

Power supply 24Vdc 50W / 220-
240V IP67 Class I selv. Non
Dimmable



OPTIONAL

F990B34A000

Power Supply dual function C.V.
Vout 24Vdc 8W, Vin 220÷240V
C.C. Iout 350mA: 8W, Vin
220÷240V IP 20 Class II Selv. NON
Dimmable



OPTIONAL
Power supply

RF25757

Power supply 24V 10W / 110-
240V IP67 Class II selv._Non
Dimmable



OPTIONAL
Power supply

RF25752

Power supply 24Vdc 20W / 220-
240V IP67 Class II selv. Non
Dimmable



OPTIONAL
Power supply

RF25747

Power supply 24V 10W /110-240V
IP20 Class II selv. Non Dimmable



OPTIONAL
Power supply

RF25748

Power Supply dual function C.V.
Vout 24Vdc 8W, Vin 220÷240V
C.C. Iout 350mA: 8W, Vin
220÷240V IP 65 Class II Selv. NON
Dimmable



OPTIONAL
Power supply

F990B27A000

Power supply 24Vdc 70W / 220-
240V IP67 Class I selv. Non
Dimmable