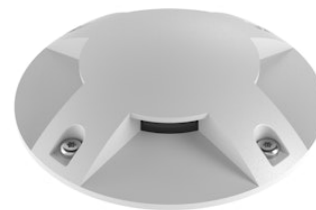


# FLOS

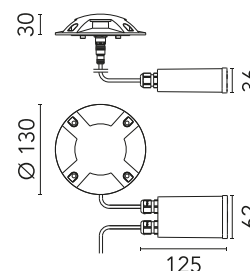
FA53500801 White

## Gobi 130 Multi

Designed by FLOS Outdoor, 2013



LED light source included. Integrated electric power supply 220-240V ON/OFF. Requires a junction box to be ordered separately. The luminaire is equipped with a protruding, neoprene, 400 mm cable with an M12 watertight screw-on connector towards the luminaire, and with a 300 mm cable for the connection to the power line. Adjustable light intensity version available upon request.



Are you a professional and your project needs consulting and support?

[BOOK AN APPOINTMENT](#)

### Main specifications

EAN	8054793670850
Mounting	In-ground
Environments	Outdoor wet location
Light source type	LED
Light sources included	Yes
LED type	Power LED
Number of lamps	1
Power (W)	4
System power (W)	7
Source flux (lm)	592
Lumen Output (lm)	164

### Physical

Colour	White
Orientation	Fixed
Net weight (kg)	0.53
Package height (mm)	80
Package width (mm)	140
Package length (mm)	235
IP internal	67
IP external	66

### Download

[Mounting instructions](#)  ZIP

### Photometric Files

[LDT / IES](#)  ZIP

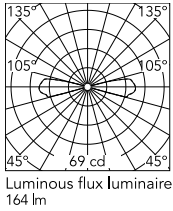
### Technical Drawings

[2D](#)  ZIP

[3D](#)  ZIP



## Schematic light drawing



## Photometric

Lighting type	Direct
Light distribution	Asymmetric
CCT (K)	4000
CRI>	80
Extreme cut off	No

## Electrical

Insulation class	II
Frequency (Hz)	50/60
Main voltage (Vac)	220-240
Power supply	Remote included
Dimmable	No
Power supply type	Non Dimmable
Dimming interface	Not Dimmable
Emergency	No

## Ecodesign and Energy Labelling

This product contains a light source of energy efficiency class D



## Notes

Dimmable version on request

## Accessories & Power Supply



REQUIRED  
Accessory

FA192

Box for Installation Gobi 130



REQUIRED  
Accessory

FA193

High Resistance In-ground Box  
Gobi 130



OPTIONAL  
Accessory

F990C00A000

2 way terminal block 4 poles IP68  
H2O stop. ( $\varnothing 5,5 \div 12$ mm cable)



OPTIONAL  
Accessory

F990C010000

3/4 way terminal block 4 poles  
IP68 H2O stop. ( $\varnothing 5,5 \div 12$ mm  
cable)



OPTIONAL  
Accessory

F990C050000

2 way terminal block 2 poles IP68  
H2O stop. ( $\varnothing 4 \div 6,9$ mm cable)



OPTIONAL  
Accessory

F990E00A000

S.P.D. (SURGE PROTECTION  
DEVICE)