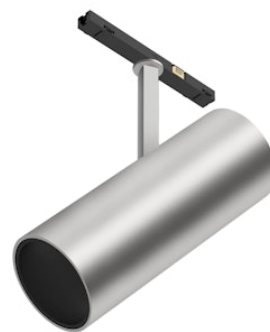


# FLOS

09.3865.05A Polished Silver

## Find Me 2

Designed by Jorge Herrera, 2020



Accent lighting LED module to be installed in the Zero Track system. Incorporated DC/DC electronic converter. Module non-dimmable. To individually control the lights, select integrated Casambi versions.

Are you a professional and your project needs consulting and support?

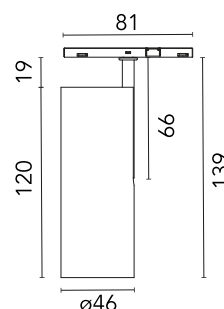
[BOOK AN APPOINTMENT](#)

### Main specifications

Mounting	Track
Environments	Indoor dry location
Light source type	LED
Light sources included	Yes
LED type	Power LED
Number of lamps	1
Power (W)	8
Source flux (lm)	650
Lumen Output (lm)	312
Efficacy (lm/W)	39

### Physical

Colour	Polished Silver
Trim	No
Orientation	Adjustable
Rotation (°)	360
Longitudinal tilting (°)	90
Spot diameter (mm)	46
Net weight (kg)	0.06
IP internal	20



### Download

Mounting instructions [↓ PDF](#)

### Photometric Files

LDT / IES [↓ ZIP](#)

### Technical Drawings

2D [↓ ZIP](#)

3D [↓ ZIP](#)

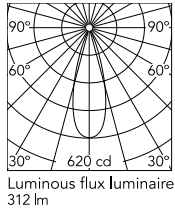


### Ecodesign and Energy Labelling

 Replaceable (LED only) light source by a professional

 Replaceable control gear by a professional

## Schematic light drawing



Beam Angle:	32°		
h(m)	E(lx)	D(m)	
1	620	0.57	
2	155	1.15	
3	69	1.72	
4	39	2.29	
5	25	2.87	

## Photometric

Lighting type	Direct
Light distribution	Symmetric
CCT (K)	2700
CRI>	90
McAdam steps (SDCM)	3
LED Life / Failure Ratio	L80B50>50.000h (Tc=85°C)
Beam angle C0-180 (°)	32
Beam angle C90-270 (°)	32
Extreme cut off	No
UGR <sub>L</sub>	<10

## Electrical

Insulation class	III
Forward voltage (V)	24
LED current (mA)	590
Power supply	Remote excluded
Dimmable	No
Power supply type	Non Dimmable

## Notes

Accessories included (honeycomb and screening crosspiece).