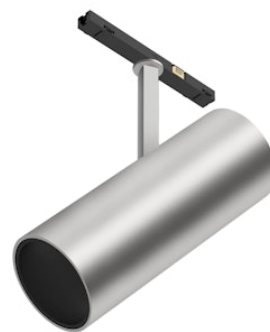


FLOS

09.3860.05A Polished Silver

Find Me 2

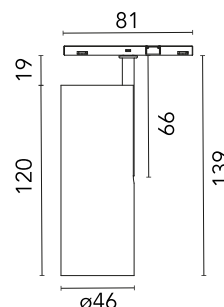
Designed by Jorge Herrera, 2020



Accent lighting LED module to be installed in the Zero Track system. Incorporated DC/DC electronic converter. Module non-dimmable. To individually control the lights, select integrated Casambi versions.

Are you a professional and your project needs consulting and support?

[BOOK AN APPOINTMENT](#)



Main specifications

Mounting	Track
Environments	Indoor dry location
Light source type	LED
Light sources included	Yes
LED type	Power LED
Number of lamps	1
Power (W)	8
Source flux (lm)	700
Lumen Output (lm)	450
Efficacy (lm/W)	57

Physical

Colour	Polished Silver
Trim	No
Orientation	Adjustable
Rotation (°)	360
Longitudinal tilting (°)	90
Spot diameter (mm)	46
Net weight (kg)	0.06
IP internal	20

Download

Mounting instructions [↓ PDF](#)

Photometric Files

LDT / IES [↓ ZIP](#)

Technical Drawings

2D [↓ ZIP](#)

3D [↓ ZIP](#)

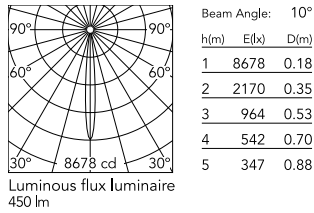


Ecodesign and Energy Labelling

 Replaceable (LED only) light source by a professional

 Replaceable control gear by a professional

Schematic light drawing



Photometric

Lighting type	Direct
Light distribution	Symmetric
CCT (K)	3000
CRI>	90
McAdam steps (SDCM)	3
LED Life / Failure Ratio	L80B50>50.000h (Tc=85°C)
Beam angle C0-180 (°)	10
Beam angle C90-270 (°)	10
Extreme cut off	No
UGR _L	<10

Electrical

Insulation class	III
Forward voltage (V)	24
LED current (mA)	590
Power supply	Remote excluded
Dimmable	No
Power supply type	Non Dimmable

Notes

Accessories included (honeycomb and screening crosspiece).