

FLOS

08.1207.14 Black

Corner Joint 3 Suspension/Surface

Designed by FLOS Architectural, 2025



Length: 65

90° corner connector used to join components in the horizontal and vertical plane.

Are you a professional and your project needs consulting and support?

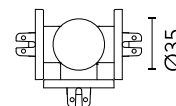
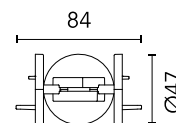
[BOOK AN APPOINTMENT](#)

Main specifications

| | |
|------------------------|---------------------|
| Environments | Indoor dry location |
| Light source type | LED |
| Light sources included | Yes |
| Number of lamps | 1 |

Physical

| | |
|---------------------|-------|
| Colour | Black |
| Orientation | Fixed |
| Length (mm) | 65 |
| Package height (mm) | 9 |
| Package width (mm) | 14 |
| Package length (mm) | 10 |
| IP internal | 20 |



Download

[Mounting instructions](#)



Electrical

| | |
|-------------------|-------|
| Insulation class | III |
| Dimming range (%) | 1-100 |
| Batteries inside | No |