

FLOS

03.1243.DYB Matte White

C1 Double Spot Wall Large Ø 56

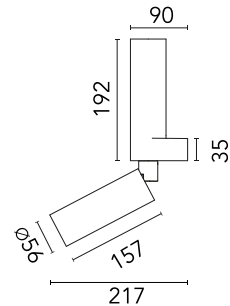
Designed by Vincent Van Duysen, 2020



Adjustable luminaire with LED for indoor use, suitable for wall installation. The body can be extracted from the installation surface for 60° orientation on the vertical axis and 180° on the horizontal axis. Integrated Full cut-off optical group. The remote power supply (not included) must be placed in an accessible location. The installation frame must be ordered separately.

Are you a professional and your project needs consulting and support?

[BOOK AN APPOINTMENT](#)



Main specifications

Mounting	Wall surface
Environments	Indoor dry location
Light source type	LED
Light sources included	Yes
LED type	Power LED
Power (W)	28
Source flux (lm)	2643
Lumen Output (lm)	2132

Physical

Colour	Matte White
Orientation	Adjustable
Rotation (°)	180
Longitudinal tilting (°)	60
Spot diameter (mm)	56
Net weight (kg)	0.96
IP internal	20

Download

Mounting instructions [↓ PDF](#)

Photometric Files

LDT / IES [↓ ZIP](#)

Technical Drawings

2D [↓ ZIP](#)

3D [↓ ZIP](#)

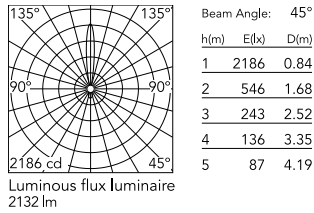
[Bim](#) [↓ ZIP](#)



Ecodesign and Energy Labelling

 Replaceable (LED only) light source by a professional

Schematic light drawing



Photometric

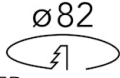
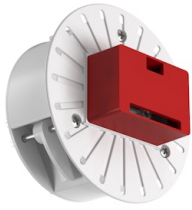
Lighting type	Direct, Indirect
Light distribution	Symmetric
CCT (K)	2700
CRI>	90
Rf fidelity index	90
Rg gamut index	99
LED Life / Failure Ratio	L80B20 >36.000h (Tc=85°C)
Beam angle C0-180 (°)	45
Beam angle C90-270 (°)	45
Extreme cut off	No

Electrical

Insulation class	III
LED current (mA)	950-1200
Power supply	Remote excluded
Dimmable	Yes

Notes

Photometric data without up diffuser.



REQUIRED
Frame

08.0226.00A

No Trim installation frame for wall mounting.



REQUIRED
Power supply

Electrical

60.9162

Continuous current power supply 220/240V - 50/60Hz. Adjustable Current 300mA-13W / 350mA-15W / 400mA-18W / 450mA-20W / 500mA-22W / 550mA-24W / 600mA-27W / 650mA-29W / 700mA-31W / 750mA-32W / 800mA-33W / 850mA-35W / 900mA-38W / 950mA-40W / 1000/1050mA-4...



REQUIRED
Power supply

Electrical

60.9276

Continuous current power supply of 20-40W, DALI 2 110/240V - 50/60Hz. Power current selected through adjustable 350mA-18,5W / 400mA-21W / 500mA-26,5W / 600mA-31,5W / 650mA-34,5W / 700mA-37W / 750mA-39,5W / 800 / 850 / 900 / 950 / 1000 / 1050 / 1200 mA...



REQUIRED
Power supply

Electrical

60.9207

Casambi continuous current power supply, dimmable 220/240V - 50/60Hz, 300mA - 16W / 350mA - 18,5W / 400mA - 21,5W / 450 mA - 24W / 500mA - 27W / 600mA - 32W / 650 mA - 35W / 700 mA - 36W / 750 / 800 / 900 / 1000 / 1050 / 1200 mA - 38W.

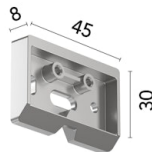


REQUIRED
Power supply

Electrical

60.9439

Continuous current power supply, 0/1-10V dimmable, 220/240V - 50/60Hz, 300mA-16W / 350mA-18W / 400mA-21W / 500mA-27W / 600mA-32W / 650mA-35W / 700 / 750 / 800 / 900 / 950 / 1000 / 1050mA-36W



REQUIRED
Accessory

08.0254.00A

Aluminum Mount for Surface Flush Installation (wall) Double



REQUIRED
Power supply

Electrical

60.7678

Continuous current supply source of 240V - 50/60Hz with dimmable Dali 2, Push dimming. 150mA - 7.8W / 200mA - 10.4W / 250mA - 13W / 300mA - 15.6W / 350mA - 18.2W / 400mA - 20.8W / 500mA - 26W / 600mA - 31.2W / 700mA - 36.4W / 750mA - 39W / 800mA - 41.6...



OPTIONAL
Control interface

Electrical

60.9392

Casambi controller. Requires 1-10V or Dali driver. It must be ordered separately