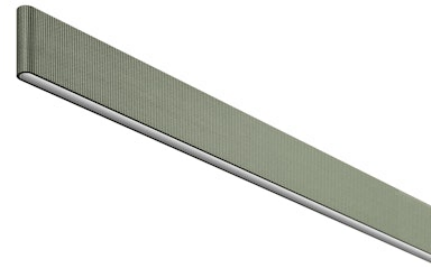


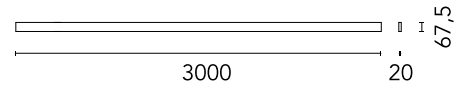
03.8506.GO.1V Grey Olive

Belt Fabric L 3000 mm Dimmable 1-10V

Designed by Ronan & Erwan Bouroullec



Electromechanical profile for interior use with integrated linear lighting for suspended installation available with 2 or 3 m lengths. Installation via suspension leather or fabric straps on the ceiling and remote power kit, to be ordered separately. Up&Down system controlled via DALI or CASAMBI individually and via 1-10V all together (Broadcast).



Are you a professional and your project needs consulting and support?

[BOOK AN APPOINTMENT](#)

Main specifications

| | |
|------------------------|---------------------|
| Mounting | Suspension |
| Environments | Indoor dry location |
| Light source type | LED |
| Light sources included | Yes |
| LED type | Top LED |
| Power (W) | 83 |
| Lumen Output (lm) | 2872 |

Physical

| | |
|---------------------|------------|
| Colour | Grey Olive |
| Orientation | Fixed |
| Length (mm) | 3000 |
| Net weight (kg) | 4.05 |
| Package height (mm) | 127 |
| Package width (mm) | 3100 |
| Package length (mm) | 127 |
| IP internal | 20 |

Download

Mounting instructions [↓ PDF](#)

Photometric Files

LDT / IES [↓ ZIP](#)

Technical Drawings

2D [↓ ZIP](#)

3D [↓ ZIP](#)

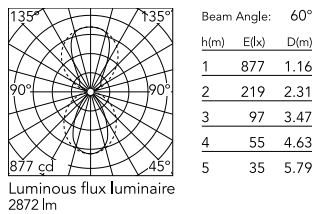
[Bim](#) [↓ ZIP](#)



Ecodesign and Energy Labelling



Schematic light drawing



Photometric

| | |
|---------------------------------|------------------|
| Lighting type | Direct, Indirect |
| Light distribution | Asymmetric |
| CCT (K) | 3000 |
| CRI> | 95 |
| McAdam steps (SDCM) | 3 |
| Beam angle C0-180 (°) | 60 |
| Beam angle C90-270 (°) | 100 |
| Beam angle indirect C0-180 (°) | 80 |
| Beam angle indirect C90-270 (°) | 90 |

Electrical

| | |
|---------------------|---------------------------------------|
| Insulation class | III |
| Forward voltage (V) | 48 |
| Power supply | Remote excluded |
| Dimmable | Yes |
| Power supply type | Dimmable 1-10V |
| Dimming interface | Remote Dimmable (Dimmer Not Included) |

Notes

Power kit and suspension straps sold separately. For the sizing of the installation keep a safety margin of 15% of the maximum power of the LED power source.

Accessories & Power Supply

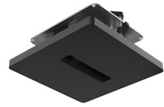


REQUIRED
Accessory

Installation

08.0182.00

Wall Mounted Feed Box

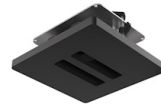


REQUIRED
Accessory

Installation

08.0180.00

Individual Ceiling Feed Box



REQUIRED
Accessory

Installation

08.0181.00

Double Ceiling Feed Box



REQUIRED
Power supply

Electrical

60.9170

LED power supply source for remote installation, 48V/120W. 220/240 Vac

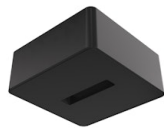


REQUIRED
Accessory

Installation

03.8514.GO

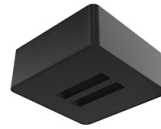
Suspension strap L 2500 mm



REQUIRED
Accessory

08.0194.00

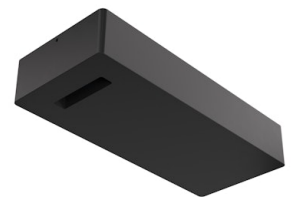
Individual Surface Feed Box



REQUIRED
Accessory

08.0195.00

Double Surface Feed Box



REQUIRED
Power supply

Installation

06.0173.14

Surface Driver Box 96W - 48V, 110-240V.



REQUIRED
Power supply

Electrical

60.9607

LED power supply source for remote installation, 110Vac-150W / 220Vac-200W



REQUIRED
Accessory

Installation

03.8510.GO

Suspension strap L 1000 mm



REQUIRED
Accessory

Installation

03.8513.GO

Suspension strap L 1500 mm



REQUIRED
Accessory

Installation

03.8511.GO

Suspension strap L 2000 mm



REQUIRED
Accessory

Installation

03.8512.GO

Suspension strap L 3000 mm



REQUIRED
Accessory

Installation

03.8520.GO

48-V Power Loop L 1500 mm



REQUIRED
Accessory

Installation

03.8521.GO

48-V Power Loop L 2500 mm



REQUIRED
Accessory

Installation

03.8522.GO

48-V Power Loop L 3500 mm



REQUIRED
Accessory

Installation

03.8527.GO

48-V Power Loop L 2000 mm



REQUIRED
Accessory

Installation

03.8528.GO

48-V Power Loop L 3000 mm