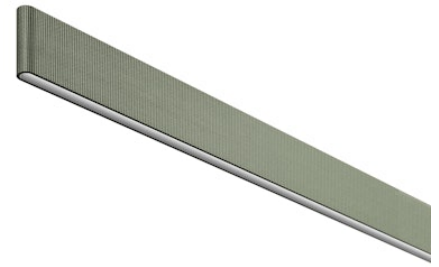


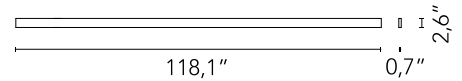
03.8501.GO.DA Grey Olive

Belt Fabric L 3000 mm Dali Version

Designed by Ronan & Erwan Bouroullec



'Electromechanical profile for interior use with integrated linear lighting for suspended installation available with 78.75" or 118.12" lengths. Installation via suspension leather or fabric straps on the ceiling and remote power kit, to be ordered separately. Up&Down system controlled via DALI or CASAMBI individually and via 1-10V all together (Broadcast).



Are you a professional and your project needs consulting and support?

[BOOK AN APPOINTMENT](#)

Main specifications

Mounting	Suspension
Environments	Indoor dry location
Light Source Type	LED
Light sources included	Yes
LED type	Top LED
Power (W)	83
System flux (lm)	2542

Physical

Color	Grey Olive
Orientation	Fixed
Length (in)	118.12
Net weight (lb)	8.94
Gross weight (lb)	10.52
Package height (in)	5
Package width (in)	122.05
Package length (in)	5
IP internal	20

Download

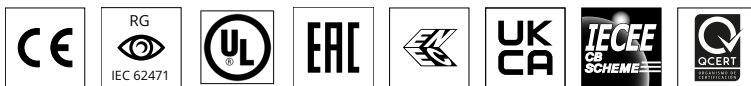
- [Family spec sheet](#) ZIP
- [Mounting instructions](#) PDF

Photometric Files

- [LDT / IES](#) ZIP

Technical Drawings

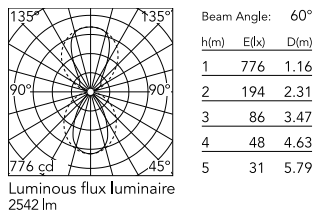
- [2D](#) ZIP
- [3D](#) ZIP



Ecodesign and Energy Labelling



Schematic light drawing



Photometric

Lighting type	Direct, Indirect
Light distribution	Asymmetric
CCT (K)	2700
CRI>	95
McAdam steps (SDCM)	3
Beam angle C0-180 (°)	60
Beam angle C90-270 (°)	100
Beam angle indirect C0-180 (°)	70
Beam angle indirect C90-270 (°)	90

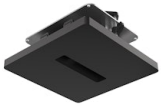
Electrical

Insulation class	III
Forward voltage (V)	48
Driver	Remote excluded
Dimmable	Yes
Dimming type	Dimmable DALI 1
Dimming interface	Remote Dimmable (Dimmer Not Included)

Notes

Power kit and suspension straps sold separately. For the sizing of the installation keep a safety margin of 15% of the maximum power of the LED power source.

Accessories & Power Supply

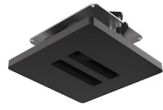


REQUIRED
Accessory

Installation

08.0180.00

Individual Ceiling Feed Box



REQUIRED
Accessory

Installation

08.0181.00

Double Ceiling Feed Box



REQUIRED
Accessory

Installation

08.0182.00

Wall Mounted Feed Box



REQUIRED
Power supply

LEDSB96W48V-NDM-D01

LED Driver, 48VDC, 96W, Non-Dimming, 120-277V



REQUIRED
Accessory

Installation

03.8513.GO

Suspension strap L 1500 mm



REQUIRED
Accessory

Installation

03.8520.GO

48-V Power Loop L 1500 mm



REQUIRED
Accessory

Installation

03.8522.GO

48-V Power Loop L 3500 mm



REQUIRED
Accessory

Installation

03.8521.GO

48-V Power Loop L 2500 mm



REQUIRED
Accessory

Installation

03.8510.GO

Suspension strap L 1000 mm



REQUIRED
Power supply

LEDSB60W48V-NDM-D01

LED Driver, 48VDC, 60W, Non-Dimming, 120-277V



REQUIRED
Accessory

Installation

03.8511.GO

Suspension strap L 2000 mm



REQUIRED
Accessory

Installation

03.8512.GO

Suspension strap L 3000 mm



REQUIRED
Accessory

Installation

03.8514.GO

Suspension strap L 2500 mm