

# FLOS

05.5156.ER Brushed Steel

## Atom 120 Non Dimmable

Designed by FLOS Architectural, 2023

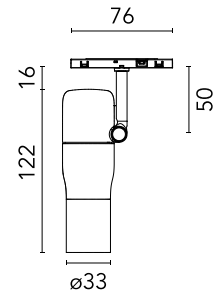


8W - 373lm - 3000K - CRI> 90 - Beam° 20

LED projection lighting module for installation in the Zero Track Pro system. Electronic DC/DC converter incorporated. Individual wireless adjustment via Casambi. Casambi control implemented via the FLOS Control® app for mobile devices (available in the Apple Store and Google Play).

Are you a professional and your project needs consulting and support?

[BOOK AN APPOINTMENT](#)



### Main specifications

Mounting	Track
Environments	Indoor dry location
Light source type	LED
Light sources included	Yes
LED type	Power LED
Number of lamps	1
Power (W)	8
Source flux (lm)	648
Lumen Output (lm)	373

### Physical

Colour	Brushed Steel
Orientation	Adjustable
Rotation (°)	360
Longitudinal tilting (°)	90
Net weight (kg)	0.16
IP internal	20

### Download

Mounting instructions [↓ PDF](#)

### Photometric Files

LDT / IES [↓ ZIP](#)

### Technical Drawings



2D [↓ ZIP](#)

3D [↓ ZIP](#)

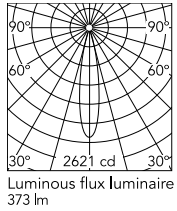


### Ecodesign and Energy Labelling

This product contains a light source of energy efficiency class G

  Non-replaceable light source

## Schematic light drawing



h(m)	E(lx)	D(m)
1	2621	0.35
2	655	0.70
3	291	1.06
4	164	1.41
5	105	1.76

## Photometric

Lighting type	Direct
Light distribution	Symmetric
CCT (K)	3000
CRI>	90
McAdam steps (SDCM)	2
Beam angle C0-180 (°)	20
Beam angle C90-270 (°)	20
Extreme cut off	No
UGR <sub>L</sub>	<10

## Electrical

Insulation class	III
Forward voltage (V)	24
LED current (mA)	600
Power supply	Remote excluded
Dimmable	No
Dimming interface	Remote Dimmable (Dimmer Not Included)