

FLOS

05.5151.ER.CB Brushed Steel

Atom 120 Casambi Dimmable

Designed by FLOS Architectural, 2023

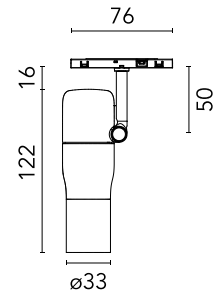


8W - 364lm - 2700K - CRI> 90 - Beam° 20

LED projection lighting module for installation in the Zero Track Pro system. Electronic DC/DC converter incorporated. Individual wireless adjustment via Casambi. Casambi control implemented via the FLOS Control® app for mobile devices (available in the Apple Store and Google Play).

Are you a professional and your project needs consulting and support?

[BOOK AN APPOINTMENT](#)



Main specifications

Mounting	Track
Environments	Indoor dry location
Light source type	LED
Light sources included	Yes
LED type	Power LED
Number of lamps	1
Power (W)	8
Source flux (lm)	600
Lumen Output (lm)	364

Physical

Colour	Brushed Steel
Orientation	Adjustable
Rotation (°)	360
Longitudinal tilting (°)	90
Net weight (kg)	0.16
IP internal	20

Download

[Mounting instructions](#)  PDF

Photometric Files

[LDT / IES](#)  ZIP

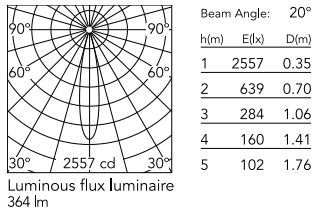
Technical Drawings

[2D](#)  ZIP

[3D](#)  ZIP



Schematic light drawing



Photometric

Lighting type	Direct
Light distribution	Symmetric
CCT (K)	2700
CRI>	90
McAdam steps (SDCM)	2
Beam angle C0-180 (°)	20
Beam angle C90-270 (°)	20
Extreme cut off	No
UGR _L	<10

Electrical

Insulation class	III
Forward voltage (V)	24
LED current (mA)	600
Power supply	Remote excluded
Dimmable	Yes
Power supply type	Dimmable Casambi
Dimming interface	Remote Dimmable (Dimmer Not Included)

Ecodesign and Energy Labelling

This product contains a light source of energy efficiency class G



Non-replaceable light source



Replaceable control gear by a professional