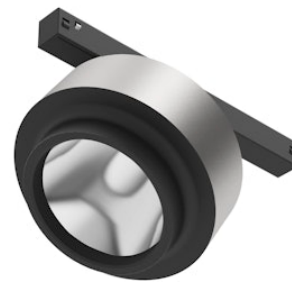


# FLOS

03.8025.05.CB Polished Silver

## Anthony Spot Track Casambi integrated

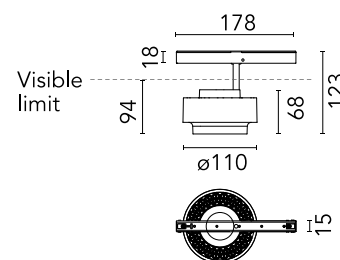
Designed by Antonio Citterio, 2020



Accent lighting LED module to be installed in The Tracking Magnet System. To obtain flood optics (35°) order Anthony Spot Medium + flood lens.

Are you a professional and your project needs consulting and support?

[BOOK AN APPOINTMENT](#)



### Main specifications

Mounting	Track
Environments	Indoor dry location
Light source type	LED
Light sources included	Yes
LED type	LED array
Lamp category	LED
Number of lamps	1
Power (W)	16.5
System power (W)	17.6
Source flux (lm)	1620
Lumen Output (lm)	1241
Efficacy (lm/W)	70.51

### Physical

Colour	Polished Silver
Trim	No
Orientation	Adjustable
Rotation (°)	360
Longitudinal tilting (°)	90
Spot diameter (mm)	110
Length (mm)	178
Net weight (kg)	0.43
IP internal	20
IP external	20

### Download

[Mounting instructions](#)  PDF

### Photometric Files

[LDT / IES](#)  ZIP

### Technical Drawings

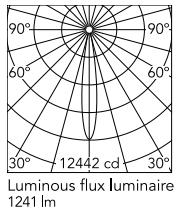
[2D](#)  ZIP

[3D](#)  ZIP

[Bim](#)  ZIP



## Schematic light drawing



## Ecodesign and Energy

### Labelling



## Photometric

Lighting type	Direct
Light distribution	Symmetric
CCT (K)	2700
CRI>	90
McAdam steps (SDCM)	2
LED Life / Failure Ratio	L80B50 > 50.000h (Tc=85°C)
Beam angle C0-180 (°)	15
Beam angle C90-270 (°)	15
UGR <sub>L</sub>	<16

## Electrical

Insulation class	III
Forward voltage (V)	48
LED current (mA)	450
Power supply	Remote excluded
Dimmable	Yes
Power supply type	Dimmable Casambi
Dimming range (%)	20-100
Dimming interface	Remote Dimmable (Dimmer Not Included)
Emergency	No

## Notes

The control system with the Casambi version of light fixtures is directly and individually regulated wirelessly using the application FLOS Control® by Casambi.

## Accessories & Power Supply



OPTIONAL  
Accessory

Optical

08.0050.00

Flood lens



OPTIONAL  
Accessory

Optical

08.8418.68A

Elliptical lens



OPTIONAL  
Accessory

Optical

08.8419.14A

Honeycomb