

# FLOS

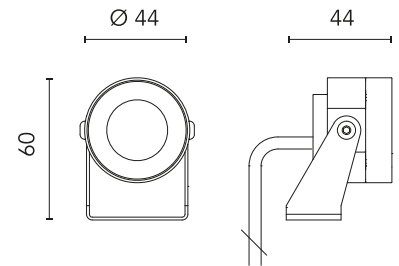
FA1051730070.A Anodized Aluminium

## Aimer 1 Rgb

Designed by FLOS Outdoor, 2011



RGB LED source included. Remote electrical power supply with DMX 3chx350mA interface to be ordered separately. Serial connection. Equipped with a 2000 mm protruding section of neoprene cable and a kit with crimpable connectors and adhesive heat-shrinkable sleeves that guarantee the tightness of the connection. Sandblasted screen-printed glass. The metal nail for ground installation needs to be ordered separately.



Are you a professional and your project needs consulting and support?

[BOOK AN APPOINTMENT](#)

### Main specifications

EAN	8054793608334
Mounting	Ground
Light source type	LED
Light sources included	Yes
LED type	Power LED
Number of lamps	1
Power (W)	3
System power (W)	3.4

### Physical

Colour	Anodized Aluminium
Orientation	Directional
Longitudinal tilting (°)	189
Net weight (kg)	0.4
Package height (mm)	90
Package width (mm)	140
Package length (mm)	140
IP internal	67
IP external	66

### Download

Mounting instructions



### Ecodesign and Energy Labelling



## Photometric

Lighting type	Direct
Light distribution	Symmetric
CCT (K)	RGB
Extreme cut off	No

## Electrical

Insulation class	III
Frequency (Hz)	50/60
Power supply	Remote excluded
Dimmable	Yes
Power supply type	Dimmable DMX
Dimming interface	Remote Dimmable (Dimmer Not Included)
Emergency	No

## Notes

Please check with your referent person in our Front Office if a code modification is needed to meet the required certification compliance

---

## Accessories & Power Supply



### OPTIONAL Accessory

F990B10A000

DMX controller; dimmer switch for recessed box (60mm hole centres)



### OPTIONAL Accessory

F990B11A000

DMX controller; stand-alone/pc interface.



### OPTIONAL Accessory

F990B13A000

DMX splitter 512



### OPTIONAL Accessory

F990B12A000

DMX cable - shielded twisted pair with 110 Ohm constant impedance



### OPTIONAL Power supply

F990B22A000

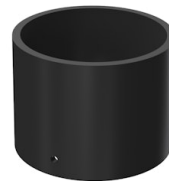
Power supply with DMX interface for RGB fixtures 36W/220÷240v-3CH x 350mA (3CH x 10 x 1W) DMX control allowed IP67 Class I Selv Eq.



### OPTIONAL Accessory

FA136

Ground Spike Aimer 1/Aimer 2/Aimer 3/Perseo 2



### OPTIONAL Accessory

FA5230

Visor for Aimer 1