

FLOS

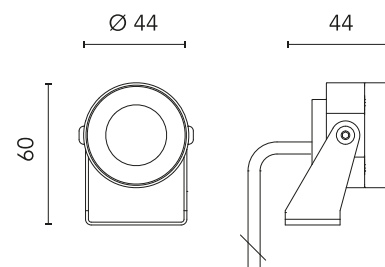
FA1051440030.A Black

Aimer 1 Constant Current

Designed by FLOS Outdoor, 2011



LED source included. Remote power supply 350/500 mA ON/OFF and dimmable 1-10V or DALI. Must be ordered separately. Serial connection. Equipped with a 2000 mm protruding section of neoprene cable and a kit with crimpable connectors and adhesive heat-shrinkable sleeves that guarantee the tightness of the connection. Extraclear transparent glass. The metal nail for ground installation needs to be ordered separately.



Are you a professional and your project needs consulting and support?

[BOOK AN APPOINTMENT](#)

Main specifications

EAN	8054793607306
Mounting	Ground
Light source type	LED
Light sources included	Yes
LED type	Power LED
Number of lamps	1
Power (W)	2
System power (W)	1.6
Source flux (lm)	155
Lumen Output (lm)	110

Physical

Colour	Black
Orientation	Directional
Longitudinal tilting (°)	189
Net weight (kg)	0.4
Package height (mm)	90
Package width (mm)	140
Package length (mm)	140
IP internal	67
IP external	66

Photometric Files

LDT / IES [ZIP](#)

LDT / IES [ZIP](#)

Technical Drawings

2D [ZIP](#)

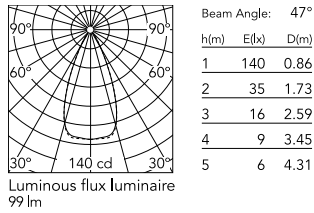
3D [ZIP](#)

Ecodesign and Energy Labelling

This product contains a light source of energy efficiency class F



Schematic light drawing



Photometric

Lighting type	Direct
Light distribution	Symmetric
CCT (K)	3000
CRI>	80
Beam angle C0-180 (°)	46
Beam angle C90-270 (°)	46
Extreme cut off	No

Electrical

Insulation class	III
Frequency (Hz)	50/60
Power supply	Remote excluded
Dimmable	Yes
Power supply type	Non Dimmable, Dimmable 1-10V, Dimmable DALI 1
Dimming interface	Remote Dimmable (Dimmer Not Included)
Emergency	No

Notes

Please check with your referent person in our Front Office if a code modification is needed to meet the required certification compliance

Accessories & Power Supply



OPTIONAL

FA990B34A000

Power Supply dual function C.V.
Vout 24Vdc 8W, Vin 220÷240V
C.C. Iout 350mA: 8W, Vin
220÷240V IP 20 Class II Selv. NON
Dimmable



OPTIONAL Accessory

FA136

Ground Spike Aimer 1/Aimer
2/Aimer 3/Perseo 2



OPTIONAL Power supply

FA129

Power supply 16 x 1W/ 110÷240V
- Iout 350mA (12x1W@110V) IP20
Class II Selv Eq. Dimmable Push-
Dimm Or 1.10V



OPTIONAL Power supply

FA184

Power supply 16 x 1W/ 110÷240V
- Iout 350mA (12x1W@110V) IP67
Class II Selv Dimmable Push-
Dimm Or 1.10V



OPTIONAL Power supply

FA135

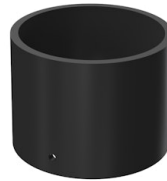
Power supply 13 x 2W/ 110÷240V
- Iout 500mA (7x2W@110V) IP20
Class II Selv. Eq. Dimmable Push-
Dimm Or 1.10V



OPTIONAL Power supply

FA218

Power supply 13 x 2W/ 110÷240V
- Iout 500mA (7x2W@110V) IP67
Class II Selv. Dimmable Push-
Dimm Or 1.10V



OPTIONAL Accessory

FA5230

Visor for Aimer 1



OPTIONAL Power supply

FA68

Power supply 10 x 1W/ 100÷265V
- Iout 350mA (7x1W/110V) IP40
Class II Selv Eq.



OPTIONAL
Power supply

RF25748

Power Supply dual function C.V.

Vout 24Vdc 8W, Vin 220÷240V

C.C. Iout 350mA: 8W, Vin

220÷240V IP 65 Class II Selv. NON

Dimmable