

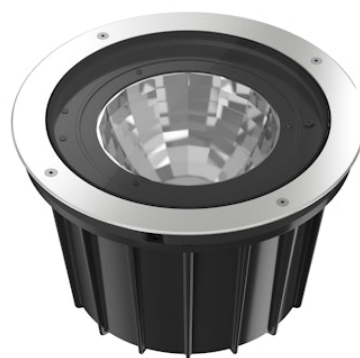
FLOS

FA53404856-310.A Matte Stainless Steel

A-Rise 290 High Emission

Designed by FLOS Outdoor, 2012

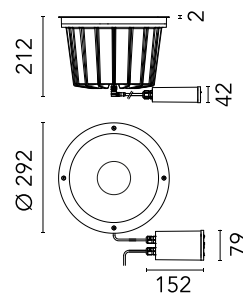
32W - 3326lm - 3000K - CRI> 80 - Beam° 40



LED light source included. Integrated 24V dc ON/OFF remote electric power supply. Adjustment on vertical axis: 15° max. Rotation on horizontal axis: 359° max. Remote power supply that must be placed in a junction box, equipped with a protruding, 400 mm cable with an M12 screw-on connector that guarantees the water tightness of the luminaire, and with a 250 mm cable for the connection to the power line. Extra clear transparent glass.

Are you a professional and your project needs consulting and support?

[BOOK AN APPOINTMENT](#)



Main specifications

EAN	8054793669533
Mounting	In-ground
Light source type	LED
Light sources included	Yes
LED type	LED array
Number of lamps	1
Power (W)	32
System power (W)	38
Source flux (lm)	4385
Lumen Output (lm)	3326

Physical

Colour	Matte Stainless Steel
Orientation	Adjustable
Rotation (°)	359
Longitudinal tilting (°)	15
Net weight (kg)	5.77
Package height (mm)	230
Package width (mm)	365
Package length (mm)	305
Package volume (m3)	0.03
IP internal	67
IP external	66

Download

[Mounting instructions](#) ZIP

Photometric Files

[LDT / IES](#) ZIP

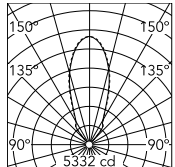
Technical Drawings

[2D](#) ZIP

[3D](#) ZIP



Schematic light drawing



Beam Angle: 41°

h(m)	E(lx)	D(m)
1	5332	0.74
2	1333	1.48
3	592	2.22
4	333	2.96
5	213	3.70

Luminous flux luminaire
3326 lm

Photometric

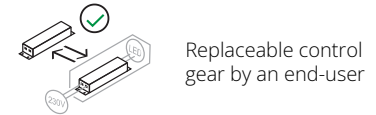
Lighting type	Direct
Light distribution	Symmetric
CCT (K)	3000
CRI>	80
Beam angle C0-180 (°)	40
Beam angle C90-270 (°)	40
Extreme cut off	No

Electrical

Insulation class	II
Frequency (Hz)	50/60
Main voltage (Vac)	220-240
Power supply	Remote included
Dimmable	Yes
Dimming interface	Dimmer Integrated
Emergency	No

Ecodesign and Energy Labelling

This product contains a light source of energy efficiency class D



Accessories & Power Supply



REQUIRED
Accessory

F4599000

Box for installation



OPTIONAL
Accessory

F990C00A000

2 way terminal block 4 poles IP68
H2O stop. (ø5,5÷12mm cable)



OPTIONAL
Accessory

F990C010000

3/4 way terminal block 4 poles
IP68 H2O stop. (ø5,5÷12mm
cable)



OPTIONAL
Accessory

F990E00A000

S.P.D. (SURGE PROTECTION
DEVICE)