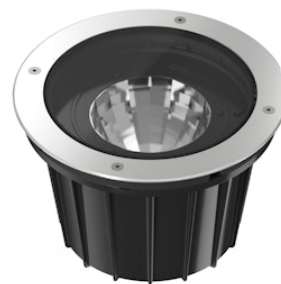


FLOS

FA53406256.A Matte Stainless Steel

A-Rise 225 High Emission

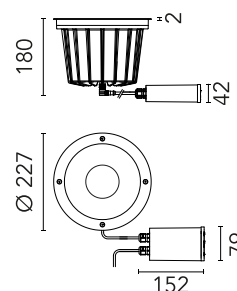
Designed by FLOS Outdoor, 2012



LED light source included. Integrated 24V dc ON/OFF remote electric power supply. Adjustment on vertical axis: 15° max. Rotation on horizontal axis: 359° max. Remote power supply that must be placed in a junction box, equipped with a protruding, 400 mm cable with an M12 screw-on connector that guarantees the water tightness of the luminaire, and with a 250 mm cable for the connection to the power line. Extra clear transparent glass.

Are you a professional and your project needs consulting and support?

[BOOK AN APPOINTMENT](#)



Main specifications

EAN	8054793670065
Mounting	In-ground
Light source type	LED
Light sources included	Yes
LED type	LED array
Number of lamps	1
Power (W)	17
System power (W)	21
Source flux (lm)	2246
Lumen Output (lm)	1673

Physical

Colour	Matte Stainless Steel
Orientation	Adjustable
Rotation (°)	359
Longitudinal tilting (°)	15
Net weight (kg)	3.12
Package height (mm)	210
Package width (mm)	290
Package length (mm)	255
Package volume (m3)	0.02
IP internal	67
IP external	66

Download

[Mounting instructions](#)  ZIP

Photometric Files

[LDT / IES](#)  ZIP

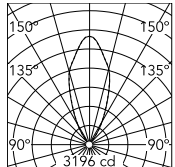
Technical Drawings

[2D](#)  ZIP

[3D](#)  ZIP



Schematic light drawing



Beam Angle: 41°

h(m)	E(lx)	D(m)
1	3196	0.76
2	799	1.52
3	355	2.27
4	200	3.03
5	128	3.79

Luminous flux luminaire
1637 lm

Photometric

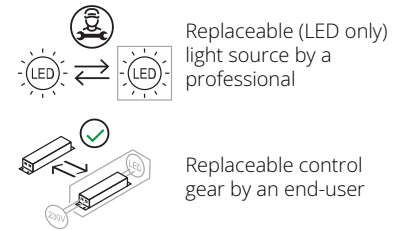
Lighting type	Direct
Light distribution	Symmetric
CCT (K)	2700
CRI>	80
Beam angle C0-180 (°)	40
Beam angle C90-270 (°)	40
Extreme cut off	No

Electrical

Insulation class	II
Frequency (Hz)	50/60
Main voltage (Vac)	220-240
Power supply	Remote included
Dimmable	No
Dimming interface	Not Dimmable
Emergency	No

Ecodesign and Energy Labelling

This product contains a light source of energy efficiency class D



Notes

'Please check with your referent person in our Front Office if a code modification is needed to meet the required certification compliance

Accessories & Power Supply



REQUIRED
Accessory

F4598000

Box for installation



OPTIONAL
Accessory

F990C00A000

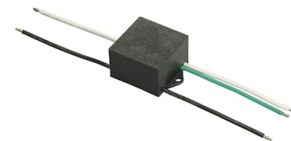
2 way terminal block 4 poles IP68
H2O stop. (ø5,5÷12mm cable)



OPTIONAL
Accessory

F990C010000

3/4 way terminal block 4 poles
IP68 H2O stop. (ø5,5÷12mm
cable)



OPTIONAL
Accessory

F990E00A000

S.P.D. (SURGE PROTECTION
DEVICE)