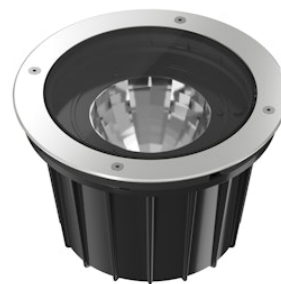


FLOS

FA53406256-300.B Matte Stainless Steel

A-Rise 225 High Emission

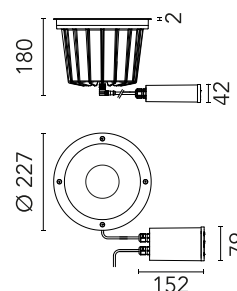
Designed by FLOS Outdoor, 2012



LED light source included. Integrated 24V dc ON/OFF remote electric power supply. Adjustment on vertical axis: 15° max. Rotation on horizontal axis: 359° max. Remote power supply that must be placed in a junction box, equipped with a protruding, 400 mm cable with an M12 screw-on connector that guarantees the water tightness of the luminaire, and with a 250 mm cable for the connection to the power line. Extra clear transparent glass.

Are you a professional and your project needs consulting and support?

[BOOK AN APPOINTMENT](#)



Main specifications

| | |
|------------------------|---------------|
| EAN | 8054793670010 |
| Mounting | In-ground |
| Light source type | LED |
| Light sources included | Yes |
| LED type | LED array |
| Number of lamps | 1 |
| Power (W) | 17 |
| System power (W) | 21 |
| Source flux (lm) | 2246 |
| Lumen Output (lm) | 1673 |

Physical

| | |
|--------------------------|-----------------------|
| Colour | Matte Stainless Steel |
| Orientation | Adjustable |
| Rotation (°) | 359 |
| Longitudinal tilting (°) | 15 |
| Net weight (kg) | 3.12 |
| Package height (mm) | 210 |
| Package width (mm) | 290 |
| Package length (mm) | 255 |
| Package volume (m3) | 0.02 |
| IP internal | 67 |
| IP external | 66 |

Download

[Mounting instructions](#)  ZIP

Photometric Files

[LDT / IES](#)  ZIP

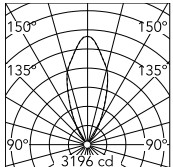
Technical Drawings

[2D](#)  ZIP

[3D](#)  ZIP



Schematic light drawing



Beam Angle: 41°

| h(m) | E(lx) | D(m) |
|------|-------|------|
| 1 | 3196 | 0.76 |
| 2 | 799 | 1.52 |
| 3 | 355 | 2.27 |
| 4 | 200 | 3.03 |
| 5 | 128 | 3.79 |

Luminous flux luminaire
1637 lm

Photometric

| | |
|------------------------|-----------|
| Lighting type | Direct |
| Light distribution | Symmetric |
| CCT (K) | 2700 |
| CRI> | 80 |
| Beam angle C0-180 (°) | 40 |
| Beam angle C90-270 (°) | 40 |
| Extreme cut off | No |

Electrical

| | |
|--------------------|-------------------|
| Insulation class | II |
| Frequency (Hz) | 50/60 |
| Main voltage (Vac) | 220-240 |
| Power supply | Remote included |
| Dimmable | Yes |
| Dimming interface | Dimmer Integrated |
| Emergency | No |

Ecodesign and Energy Labelling

This product contains a light source of energy efficiency class D



Notes

'Please check with your referent person in our Front Office if a code modification is needed to meet the required certification compliance

Accessories & Power Supply



REQUIRED
Accessory

F4598000

Box for installation



OPTIONAL
Accessory

F990C00A000

2 way terminal block 4 poles IP68
H2O stop. (ø5,5÷12mm cable)



OPTIONAL
Accessory

F990C010000

3/4 way terminal block 4 poles
IP68 H2O stop. (ø5,5÷12mm
cable)



OPTIONAL
Accessory

F990E00A000

S.P.D. (SURGE PROTECTION
DEVICE)