

FLOS

A0320009 White

265 Small

Designed by Paolo Rizzatto, 1973



Halogen - 75W

Wall lamp providing direct light. Painted steel adjustable arm and reflector. Chrome-plated brass reflector support. Cast iron tapered counterweight. Painted steel wall fixture.

Are you a professional and your project needs consulting and support?

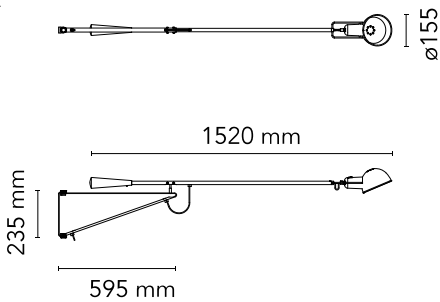
BOOK AN APPOINTMENT

Main specifications

EAN	8059607047156
Mounting	Wall
Environments	Indoor dry location
Light source type	Bulb
Light sources included	No
Lamp category	Halogen
Lamp holders	E27
Ilcos	HSGSA
Number of lamps	1
Power (W)	75

Physical

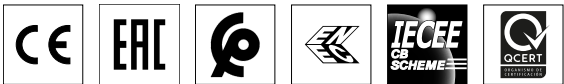
Colour	White
Length (mm)	1680
Net weight (kg)	5
Package height (mm)	1725
Package width (mm)	150
Package length (mm)	340
Package volume (m3)	0.09
IP internal	20



Download

Mounting instructions

PDF



Photometric

Light distribution

Asymmetric

Electrical

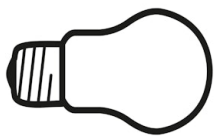
Insulation class	II
Frequency (Hz)	50/60
Main voltage (Vac)	220-250
Dimmable	Yes
Dimming interface	Switch Integrated (Remote Dimmable)
Plug type	Type C
Batteries inside	No

Bulbs



NOT INCLUDED

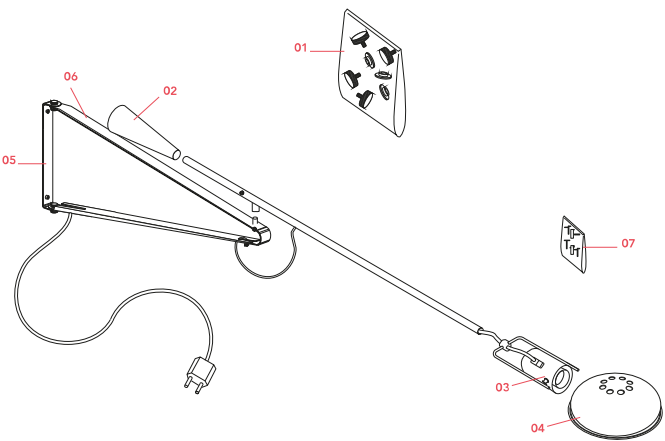
RF32563
LED Lamp 11.5W E27 220-240V
2700K A70



NOT INCLUDED

RF32564
LED Lamp 11.5W E27 220-240V
3000K A70

Spare Parts



- | | | |
|-----|--|-----------|
| 01. | 265/265 Small Screw set for wall attachment | RA0300200 |
| 02. | 265 Small Counterweight White | RF32736 |
| 03. | 265/265 Small White lamp holder with reflector support and electrical cable assembly | RF01395 |
| 04. | White reflector | RF00784 |
| 05. | 265 Small Wall Attachment White | RF32740 |
| 06. | 265 Small Bracket Support White | RF32738 |
| 07. | 265/265 Small Screws bag group stm3x 3 ce c.10 p | RF11719 |



RA0300200
265/265 Small Screw set for wall attachment



RF32736
265 Small Counterweight White



RF01395
265/265 Small White lamp holder with reflector support and electrical cable assembly



RF00784
White reflector



RF32740
265 Small Wall Attachment White



RF32738
265 Small Bracket Support White



RF11719
265/265 Small Screws bag group stm3x 3 ce c.10 p