

## RF29987

Superarchimoon Electrical wiring assembly with dimmer 1012s lfp



WARNING! When installing and whenever acting on the appliance, ensure that the power supply has been switched off.  
For the installation of the spare-part, it is necessary to consult a qualified electrician.

**RF29987**

Superarchimoon Electrical wiring assembly with dimmer 1012s lfp

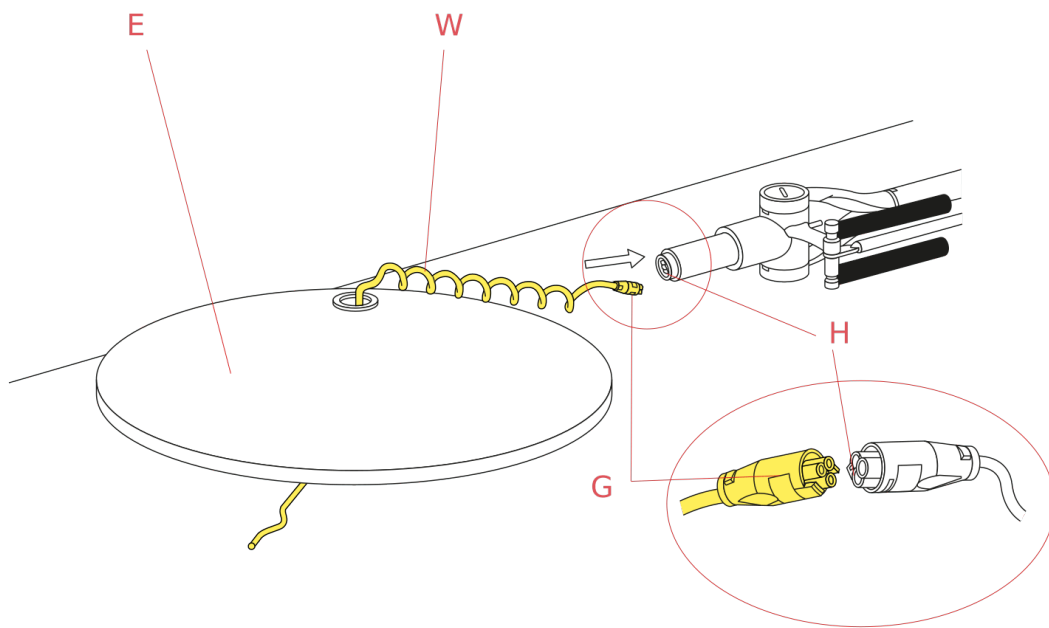


Fig.1

Assemble the cover (E) on the base taking care to pass the power supply cable (W) through the central hole of the cover (E); connect the plug (G) of the cable to the structure connector (H).

WARNING! When installing and whenever acting on the appliance, ensure that the power supply has been switched off.  
For the installation of the spare-part, it is necessary to consult a qualified electrician.