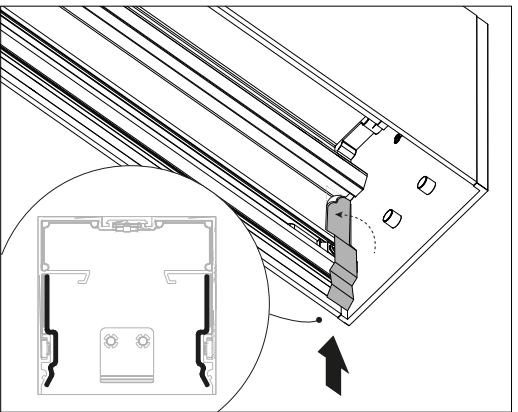
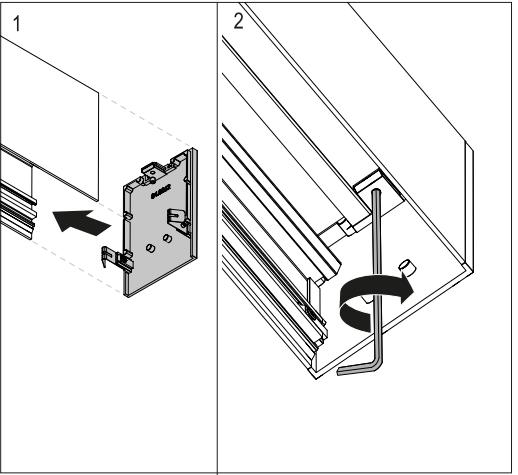


ENDCAP INSTALLATION

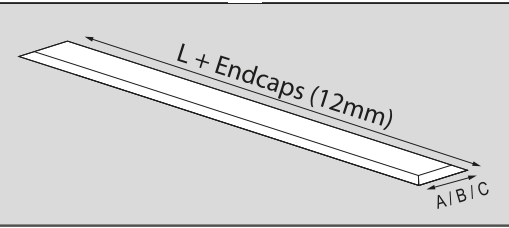
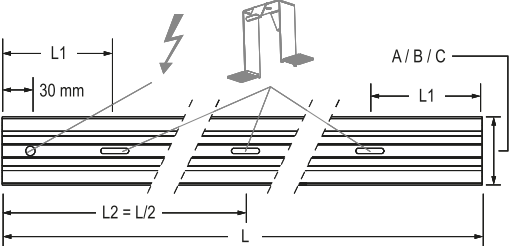


A RECESSING DIMENSIONS

DIMENSIONES DE EMPOTRAMIENTO / DIMENSIONI / EINBAUABMESSUNGEN / DIMENSIONS D'ENCASTREMENT / DIMENSÕES DO LUMINÁRIO / 取り付けの寸法 / 嵌入的体积 / РАЗМЕРЫ ДЛЯ ВСТРАИВАНИЯ / ИМЕК ЖЕРЛЕРІНІЇ / ӨЛШЕМДЕРІ / ابعاد التركيب الخائفي

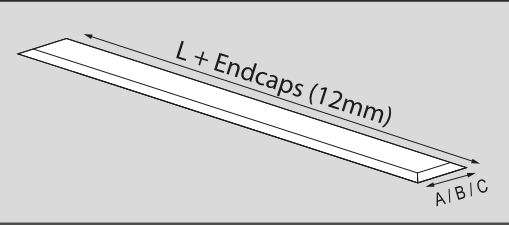
A.1 NO TRIM

Ref.	L (mm)	L1 (mm)	L2 (mm)	A (mm)	B (mm)	C (mm)
IN-FINITY 565	565	120	-	43	78	105
IN-FINITY 845	845	120	-	43	78	105
IN-FINITY 1125	1125	120	-	43	78	105
IN-FINITY 1405	1405	120	-	43	78	105
IN-FINITY 1690	1690	120	845	43	78	105
IN-FINITY 1970	1970	120	985	43	78	105
IN-FINITY 2530	2530	120	1265	43	78	105
IN-FINITY 3095	3095	120	1547.5	43	78	105

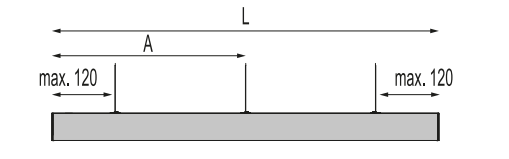


A.2 TRIM

Ref.	L (mm)	A (mm)	B (mm)	C (mm)
IN-FINITY 565	565	41	76	103
IN-FINITY 845	845	41	76	103
IN-FINITY 1125	1125	41	76	103
IN-FINITY 1405	1405	41	76	103
IN-FINITY 1690	1690	41	76	103
IN-FINITY 1970	1970	41	76	103
IN-FINITY 2530	2530	41	76	103
IN-FINITY 3095	3095	41	76	103



A.3 SUSPENSION DOWN



Ref.	L (mm)	A (mm)
IN-FINITY 565	565	-
IN-FINITY 845	845	-
IN-FINITY 1125	1125	-
IN-FINITY 1405	1405	-
IN-FINITY 1690	1690	-
IN-FINITY 1970	1970	-
IN-FINITY 2530	2530	1265
IN-FINITY 3095	3095	1547,5

B LUMINAIRE INSTALLATION

INSTALACIÓN DE LA LUMINARIA / INSTALLAZIONE DELLA LAMPADA / INSTALLATION DER BELEUCHTUNG / INSTALLATION DU LUMINAIRE / INSTALAÇÃO DO APARELHO DE ILUMINAÇÃO / 照明器具の設置・取り付け / 灯具的安装 / МОНТАЖ ОСВЕТИТЕЛЬНОГО ПРИБОРА / ШАМДАЛДЫ ОРНАТУ / تركيب وحدة الإنارة

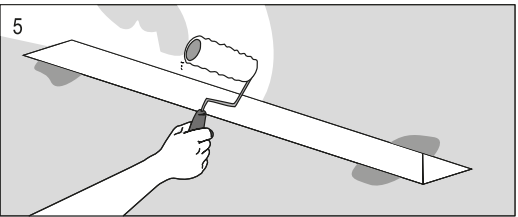
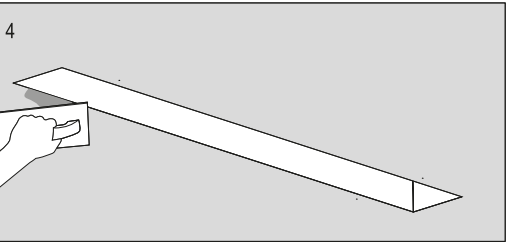
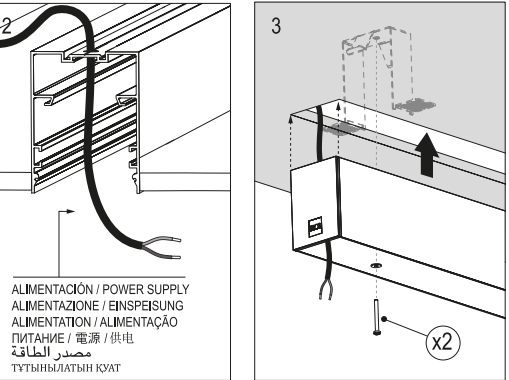
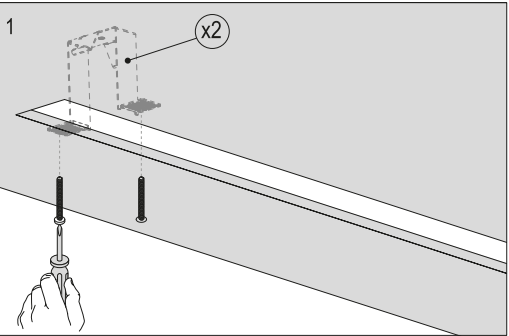
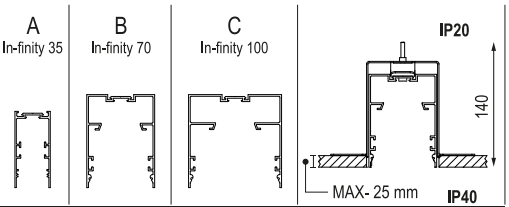
Maximum number of LED modules / Drivers connected per MCB Número máximo de módulos LED / Controladores conectados por MCB		
MCB type	Infinity 35&70	Infinity 100
B13	17	12
C13	28	20
B16	22	15
C16	38	26

L	N° Drivers T.N.S.D
565	1
845	1
1125	1
1405	1
1690	2
1970	2
2530	2
3095	3

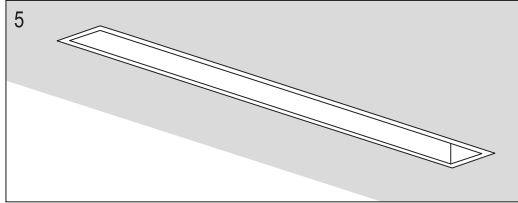
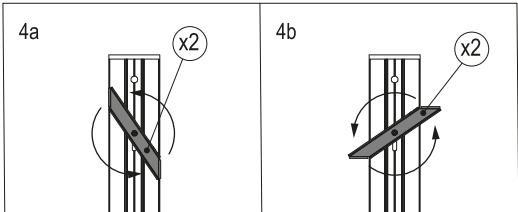
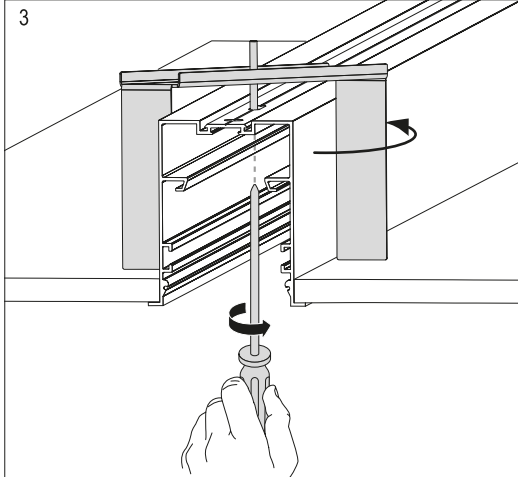
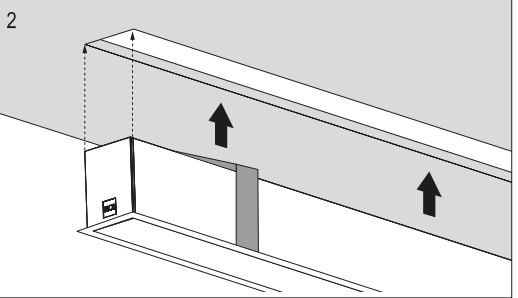
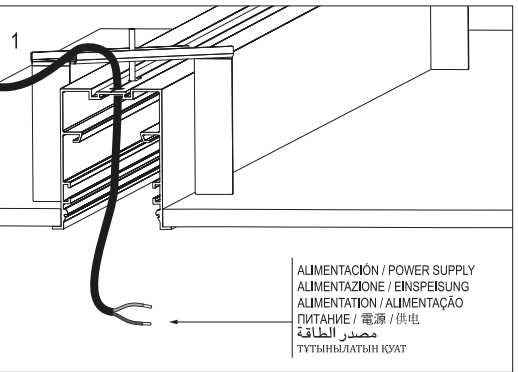
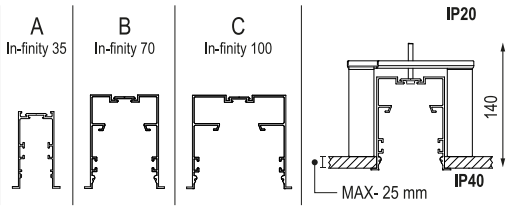
For DALI versions, each LED module / driver needs a DALI address
Para las versiones DALI, cada módulo/controlador LED necesita una dirección DALI

⚠
FOR UL PRODUCT: maximum of 15 unit connected or total
input less than 6 amps /
PARA PRODUCTOS UL: máximo de 15 unidades conectadas o
imputación total menos de 6 amperios

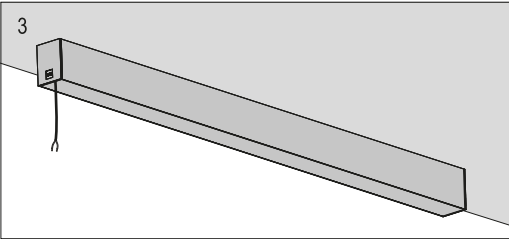
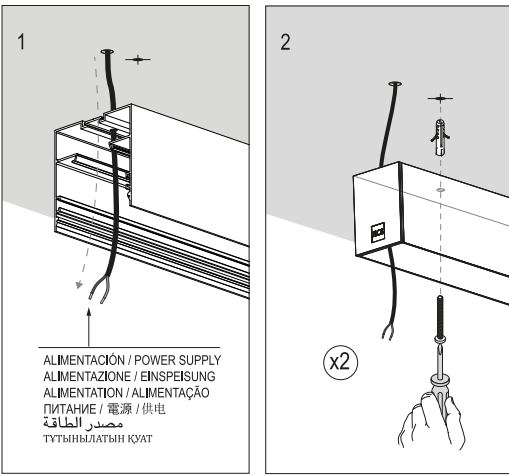
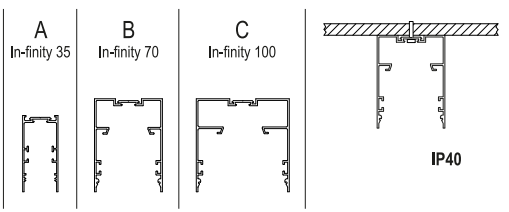
B.1 NO TRIM installation



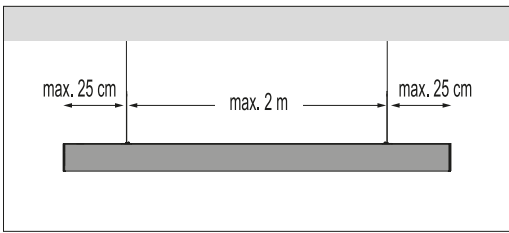
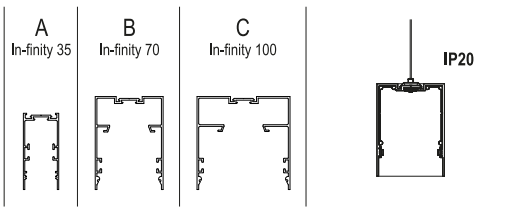
B.2 TRIM installation



B.3 SURFACE installation

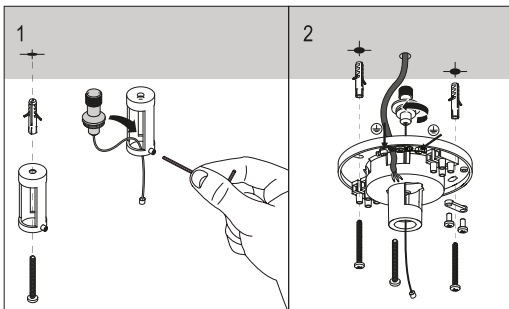


B.4 SUSPENSION DOWN installation

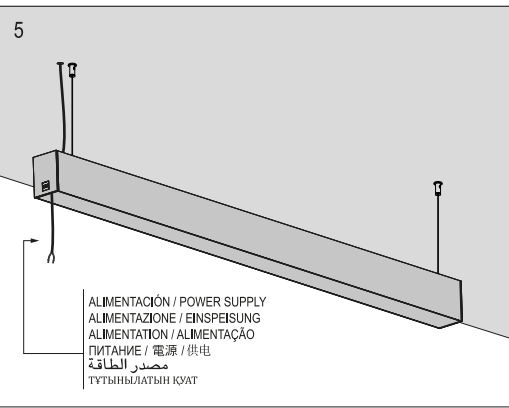
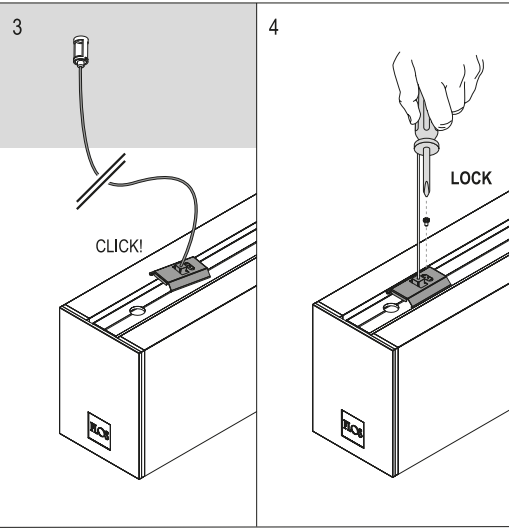


ACCESSORIES

ACCESORIOS / ACCESSORI / ZUBEHÖR / ACCESSOIRES /
ACCESSÓRIOS / アクセサリー / 配件 / AKCECCYAPI /
KEPEK-JAPATAP / اإكسسوارات

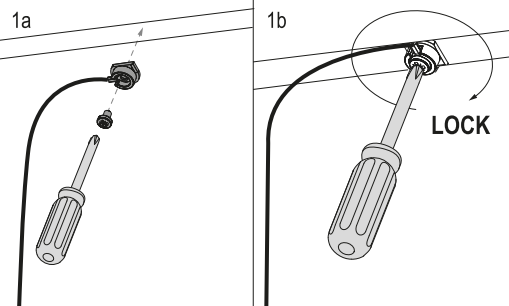
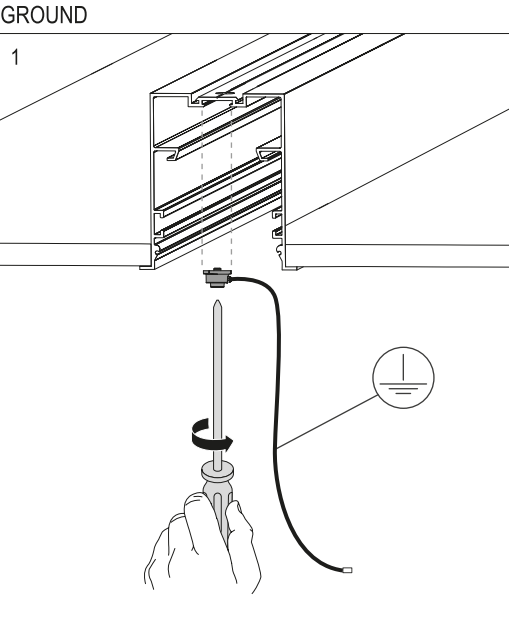


L = BROWN / MARRON
N = BLUE / AZUL
DA+ = RED / ROJO
DA- = WHITE / BLANCO
⊕ = GREEN
⊖ = VERDE

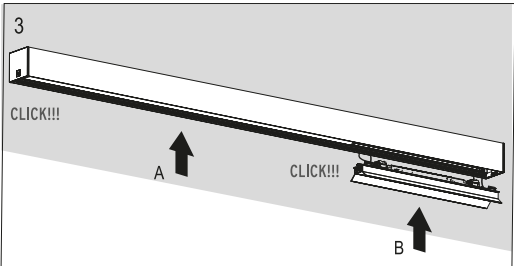
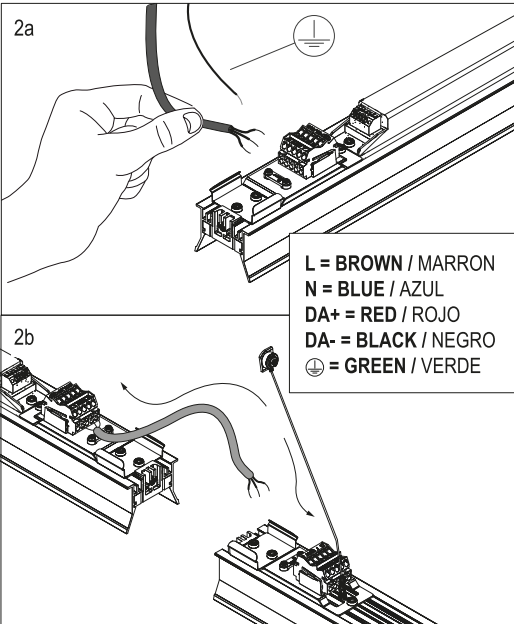
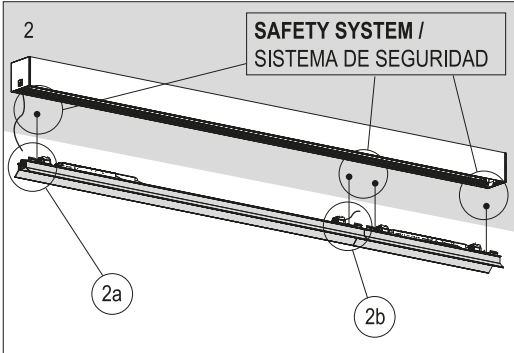
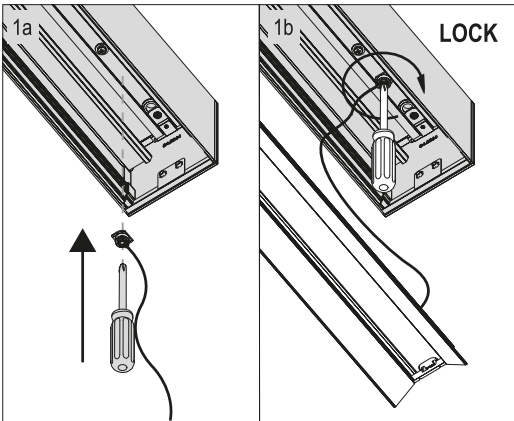


ELECTRICAL CONNECTION

CONEXIÓN ELÉCTRICA / CONNESSIONE ELETTRICA / ELEKTRIS-
CHER ANSCHLUSS / CONNEXION ÉLECTRIQUE / LIGAÇÃO
ELÉCTRICA / コネクション / 電力连接 / ЭЛЕКТРИЧЕСКОЕ
ПОДКЛЮЧЕНИЕ / ЭЛЕКТРЛІК БАЙЛАНЫС / التوصيل الكهربائي



SAFETY SYSTEM



DIFUSSER

