

RF6605100

JACK PLUG WITH COAXIAL CABLE AND DIMMER



Copycat



Serena



Taccia
Small
Led

WARNING! When installing and whenever acting on the appliance, ensure that the power supply has been switched off.
For the installation of the spare-part, it is necessary to consult a qualified electrician.

RF6605100

JACK PLUG WITH COAXIAL CABLE AND DIMMER



Fig.1

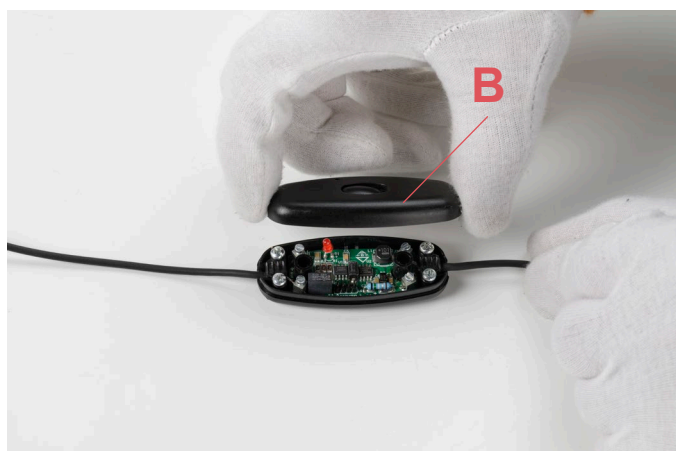


Fig.2

Unfasten the 2 screws (A) from underneath the dimmer and remove the dimmer cover (B).

WARNING! When installing and whenever acting on the appliance, ensure that the power supply has been switched off.
For the installation of the spare-part, it is necessary to consult a qualified electrician.

©2021 Flos - All rights reserved - www.flos.com
Flos reserves the right to introduce any changes to its own models, without prior notice.

RF6605100

JACK PLUG WITH COAXIAL CABLE AND DIMMER

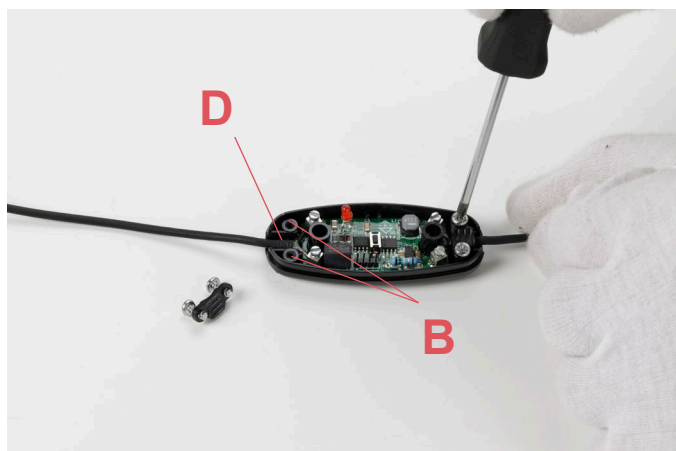


Fig.3

Unfasten the 2 screws (C) of the cable clamp (D) and disconnect the wires from the terminal box (F) through a tiny flat headed screw driver.

Assemble now the new spare-part:

Unfasten the 2 screws (A) from underneath the dimmer and remove the dimmer cover (B).

Connect the electrical wires to the terminal (F) respecting the polarities of the dimmer.
Position the cable clamp (D) and fasten back the screws (C).

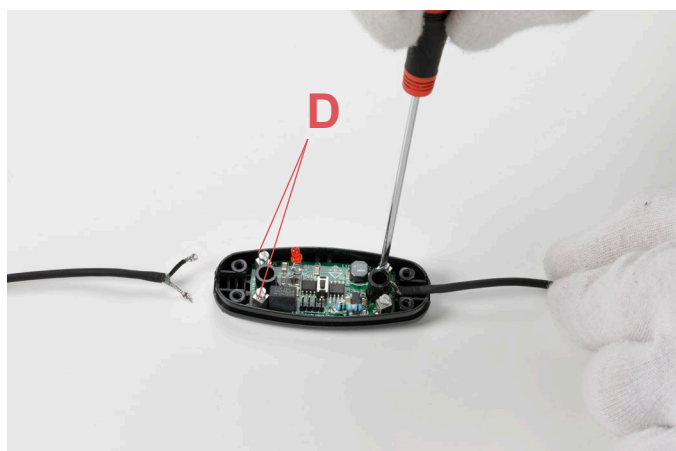


Fig.4

Close the dimmer by positioning the cover (B) and fastening the 2 screws (A)

WARNING! When installing and whenever acting on the appliance, ensure that the power supply has been switched off.
For the installation of the spare-part, it is necessary to consult a qualified electrician.