

LA PLUS BELLE F3680046

EN

RF3680246

ANODIZED BRONZE MIRROR HOOK



WARNING! When installing and whenever acting on the appliance, ensure that the power supply has been switched off.
For the installation of the spare-part, it is necessary to consult a qualified electrician.

©2021 Flos - All rights reserved - www.flos.com

Flos reserves the right to introduce any changes to its own models, without prior notice.

LA PLUS BELLE F3680046

EN

RF3680246

ANODIZED BRONZE MIRROR HOOK

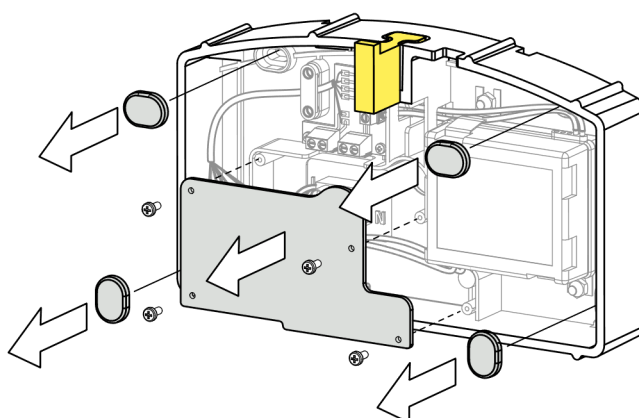


Fig.1

Remove the mirror from the wall.

Disconnect the electrical cables.

Remove the power unit from the wall..

WARNING! When installing and whenever acting on the appliance, ensure that the power supply has been switched off.
For the installation of the spare-part, it is necessary to consult a qualified electrician.

©2021 Flos - All rights reserved - www.flos.com
Flos reserves the right to introduce any changes to its own models, without prior notice.

LA PLUS BELLE F3680046

EN

RF3680246

ANODIZED BRONZE MIRROR HOOK



Fig.2



Fig.3

Remove the screw located behind the power unit.

Remove the mirror hook from the power unit (See the yellow arrow).

WARNING! When installing and whenever acting on the appliance, ensure that the power supply has been switched off. For the installation of the spare-part, it is necessary to consult a qualified electrician.

©2021 Flos - All rights reserved - www.flos.com
Flos reserves the right to introduce any changes to its own models, without prior notice.

LA PLUS BELLE F3680046

EN

RF3680246

ANODIZED BRONZE MIRROR HOOK



Fig.4



Fig.5

Position the mirror hook to the power unit
(See the green arrow).

Tighten the screw behind the power unit.

WARNING! When installing and whenever acting on the appliance, ensure that the power supply has been switched off.
For the installation of the spare-part, it is necessary to consult a qualified electrician.

©2021 Flos - All rights reserved - www.flos.com
Flos reserves the right to introduce any changes to its own models, without prior notice.

LA PLUS BELLE F3680046

EN

RF3680246

ANODIZED BRONZE MIRROR HOOK

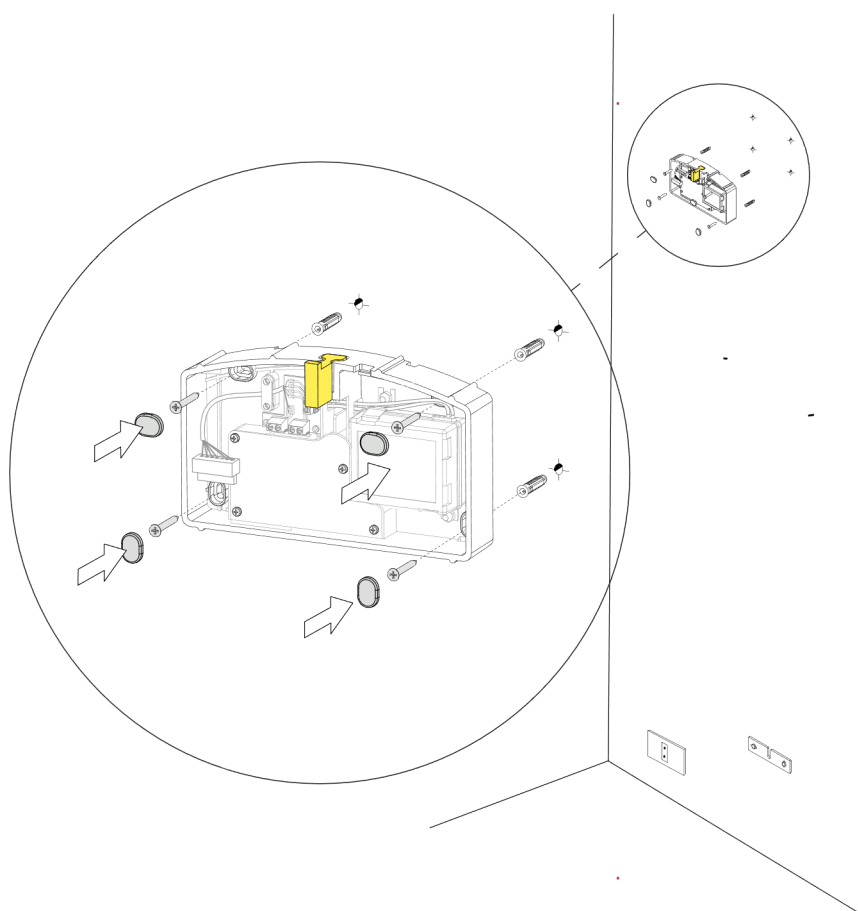


Fig.6

Position the power unit by screwing the screws in the same position as the old power unit.

WARNING! When installing and whenever acting on the appliance, ensure that the power supply has been switched off. For the installation of the spare-part, it is necessary to consult a qualified electrician.

LA PLUS BELLE F3680046

EN

RF3680246

ANODIZED BRONZE MIRROR HOOK

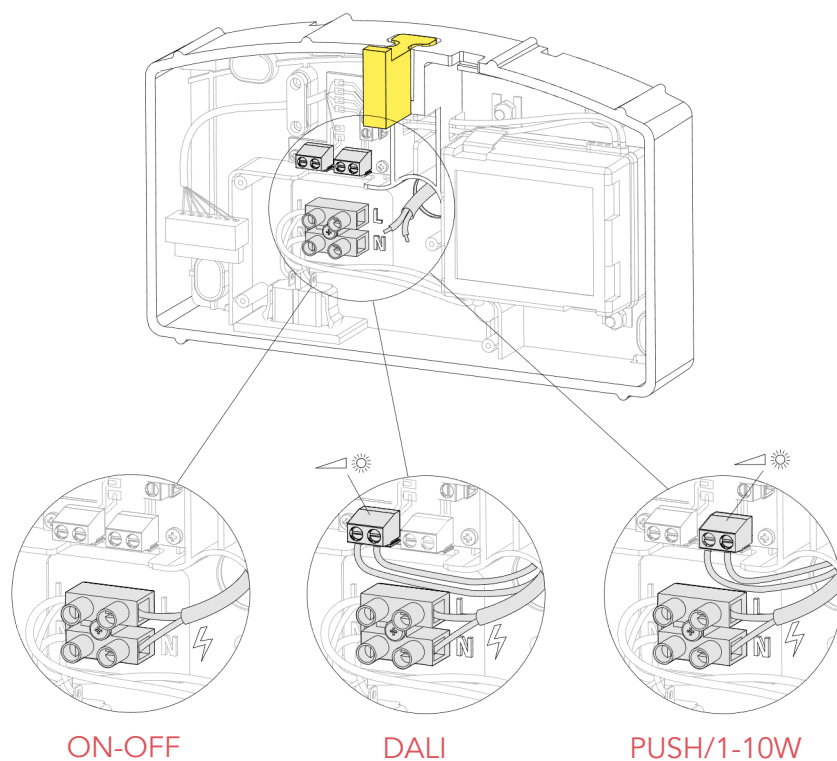


Fig.7

Connect the electric cables in the same position as the previous version.

WARNING! When installing and whenever acting on the appliance, ensure that the power supply has been switched off. For the installation of the spare-part, it is necessary to consult a qualified electrician.

LA PLUS BELLE F3680046

EN

RF3680246

ANODIZED BRONZE MIRROR HOOK

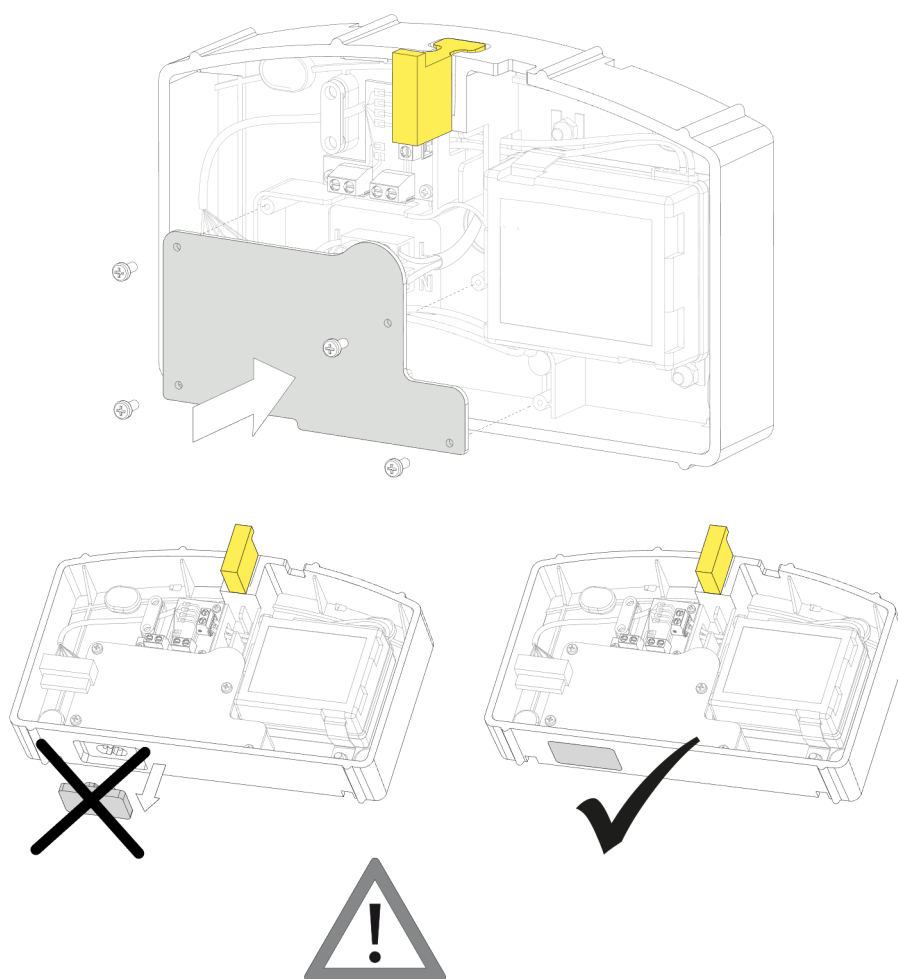


Fig.8

Position the protection screen and fix it with the 4 screws.

WARNING! When installing and whenever acting on the appliance, ensure that the power supply has been switched off. For the installation of the spare-part, it is necessary to consult a qualified electrician.

LA PLUS BELLE F3680046

EN

RF3680246

ANODIZED BRONZE MIRROR HOOK

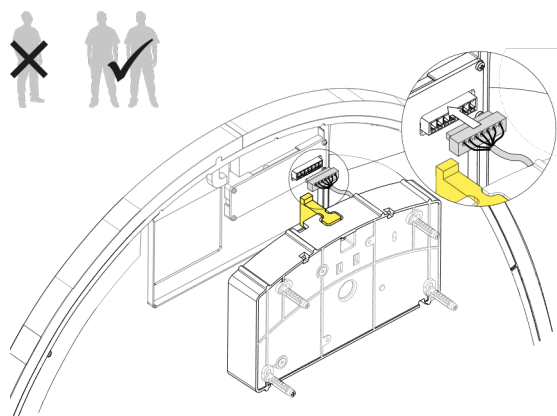


Fig.9

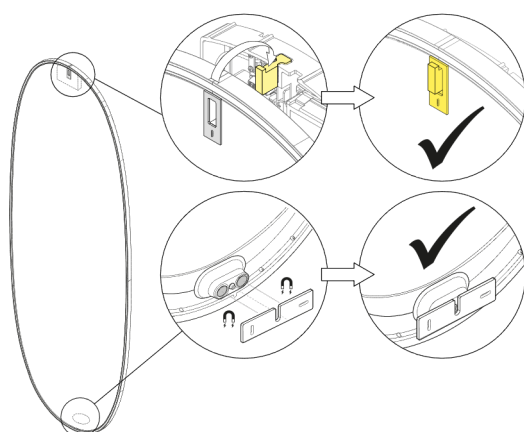


Fig.10

Position and connect the mirror.

WARNING! When installing and whenever acting on the appliance, ensure that the power supply has been switched off.
For the installation of the spare-part, it is necessary to consult a qualified electrician.