

RF26677

Wirering Ring assembly



WARNING! When installing and whenever acting on the appliance, ensure that the power supply has been switched off.
For the installation of the spare-part, it is necessary to consult a qualified electrician.

RF26677

Wiring Ring assembly

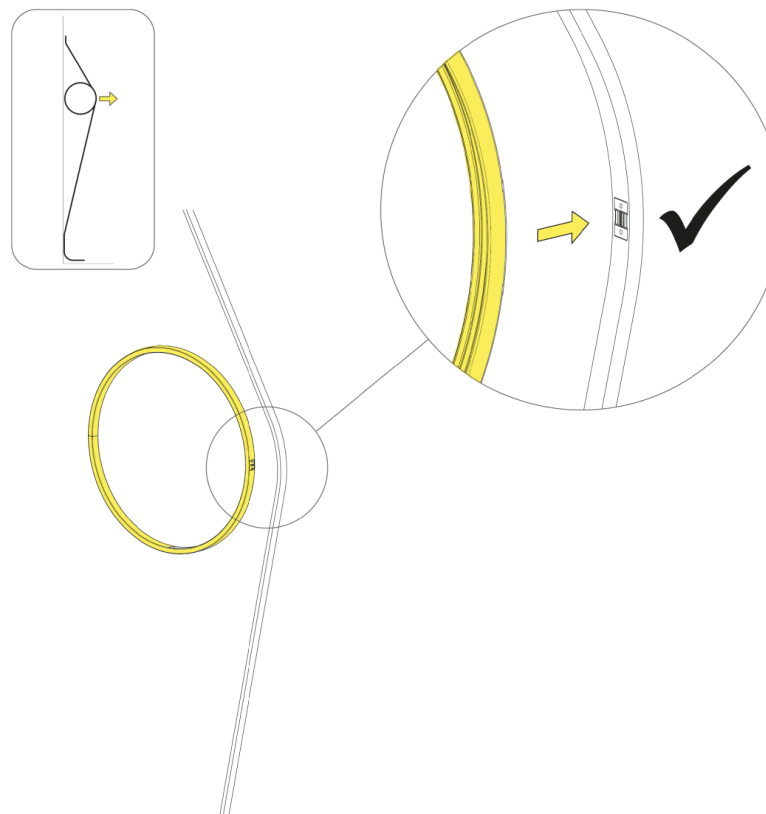


Fig.1

Disconnect the body lamp from the old ring.

WARNING! When installing and whenever acting on the appliance, ensure that the power supply has been switched off. For the installation of the spare-part, it is necessary to consult a qualified electrician.

©2021 Flos - All rights reserved - www.flos.com
Flos reserves the right to introduce any changes to its own models, without prior notice.

RF26677

Wiring Ring assembly

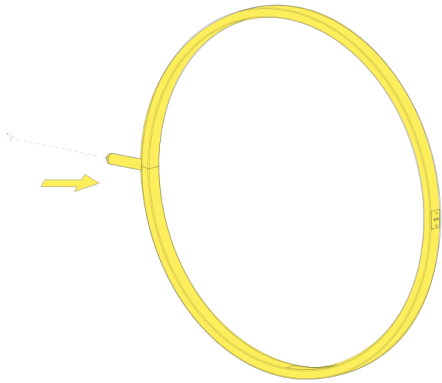


Fig.2

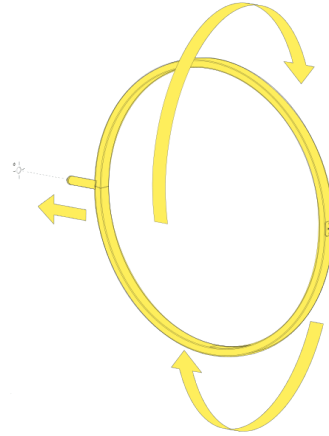


Fig.3

Remove the old ring from the wall.
Insert the new ring in the hole into the wall.

WARNING! When installing and whenever acting on the appliance, ensure that the power supply has been switched off.
For the installation of the spare-part, it is necessary to consult a qualified electrician.

RF26677

Wiring Ring assembly

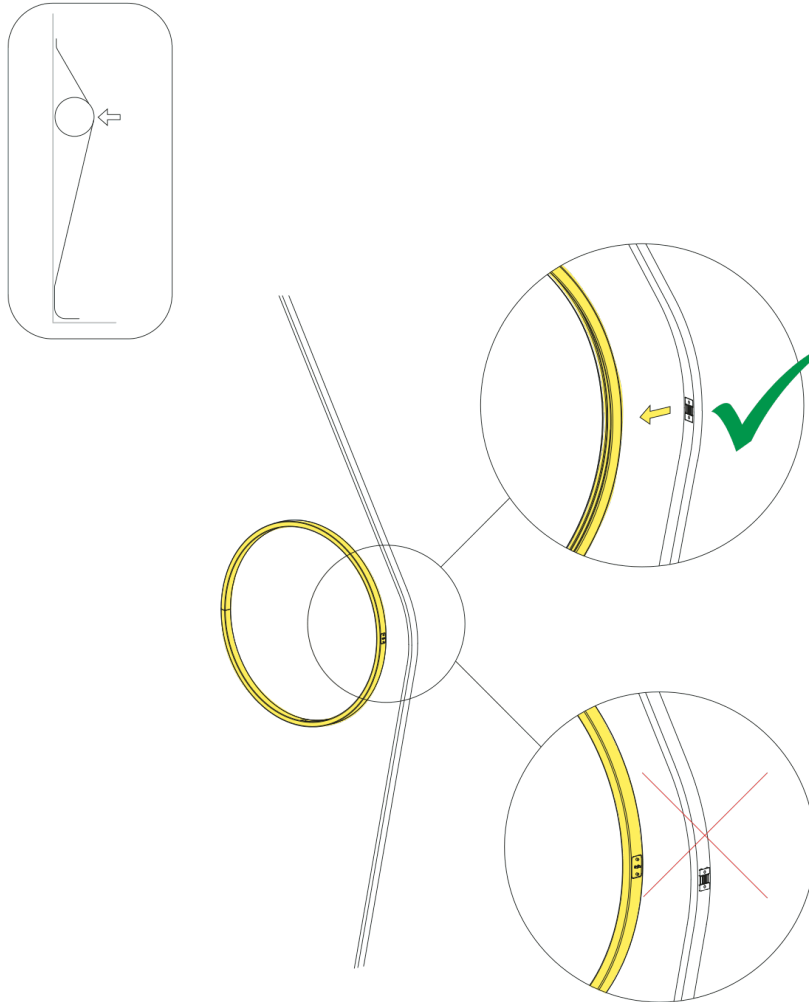


Fig.4

Connect the body lamp to the new ring respecting the correct installation direction.

WARNING! When installing and whenever acting on the appliance, ensure that the power supply has been switched off. For the installation of the spare-part, it is necessary to consult a qualified electrician.