

## RF26649

Wiring Electrical mounting body assembly



WARNING! When installing and whenever acting on the appliance, ensure that the power supply has been switched off.  
For the installation of the spare-part, it is necessary to consult a qualified electrician.

## RF26649

Wiring Electrical mounting body assembly

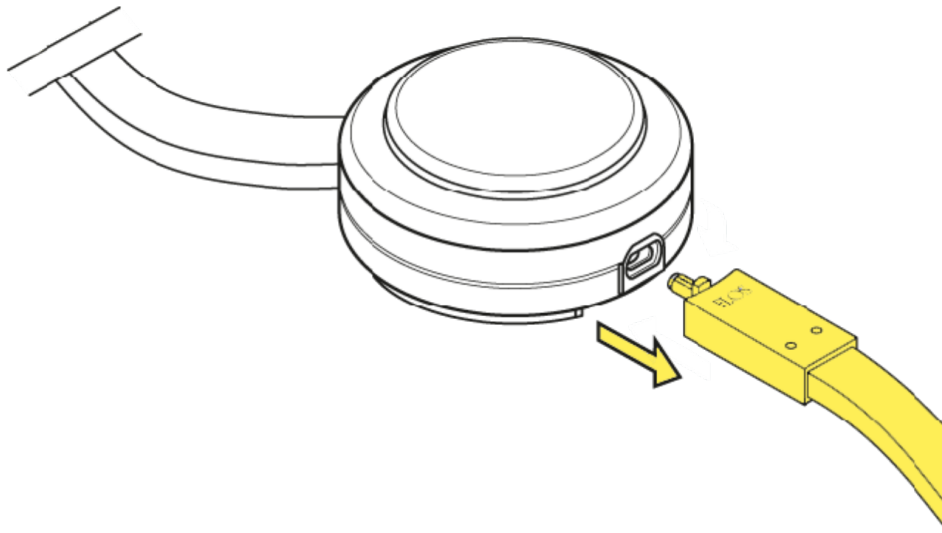


Fig.1

Disconnect the plug of the old body lamp from the dimmer unit by rotating it 90° counterclockwise.

WARNING! When installing and whenever acting on the appliance, ensure that the power supply has been switched off.  
For the installation of the spare-part, it is necessary to consult a qualified electrician.

©2021 Flos - All rights reserved - [www.flos.com](http://www.flos.com)  
Flos reserves the right to introduce any changes to its own models, without prior notice.

# RF26649

Wiring Electrical mounting body assembly

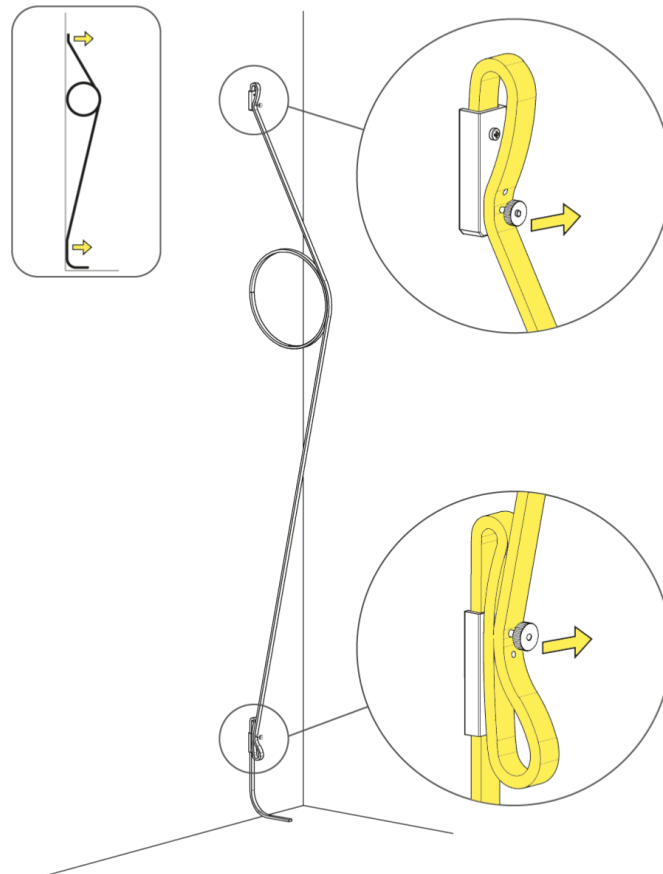


Fig.2

Unscrew and remove the ferrule.

WARNING! When installing and whenever acting on the appliance, ensure that the power supply has been switched off. For the installation of the spare-part, it is necessary to consult a qualified electrician.

# RF26649

## Wiring Electrical mounting body assembly

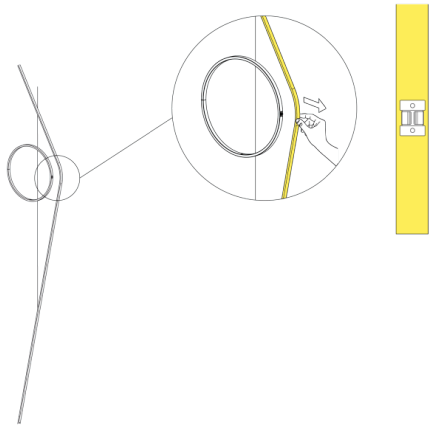


Fig.3

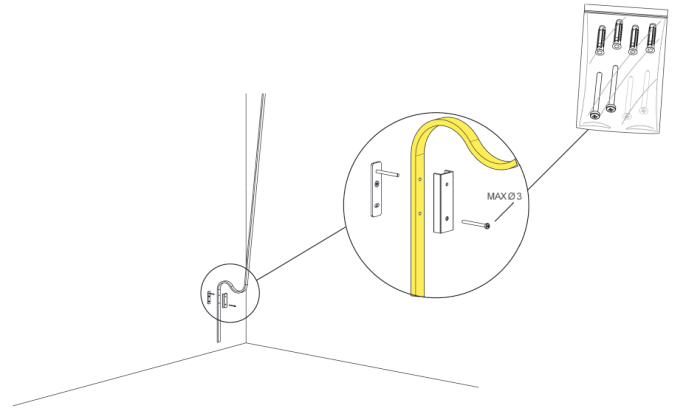


Fig.4

Disconnect the body lamp by the ring.

Unfasten the screws and remove the cover of the lower joint.

WARNING! When installing and whenever acting on the appliance, ensure that the power supply has been switched off.  
For the installation of the spare-part, it is necessary to consult a qualified electrician.

## RF26649

Wiring Electrical mounting body assembly

1

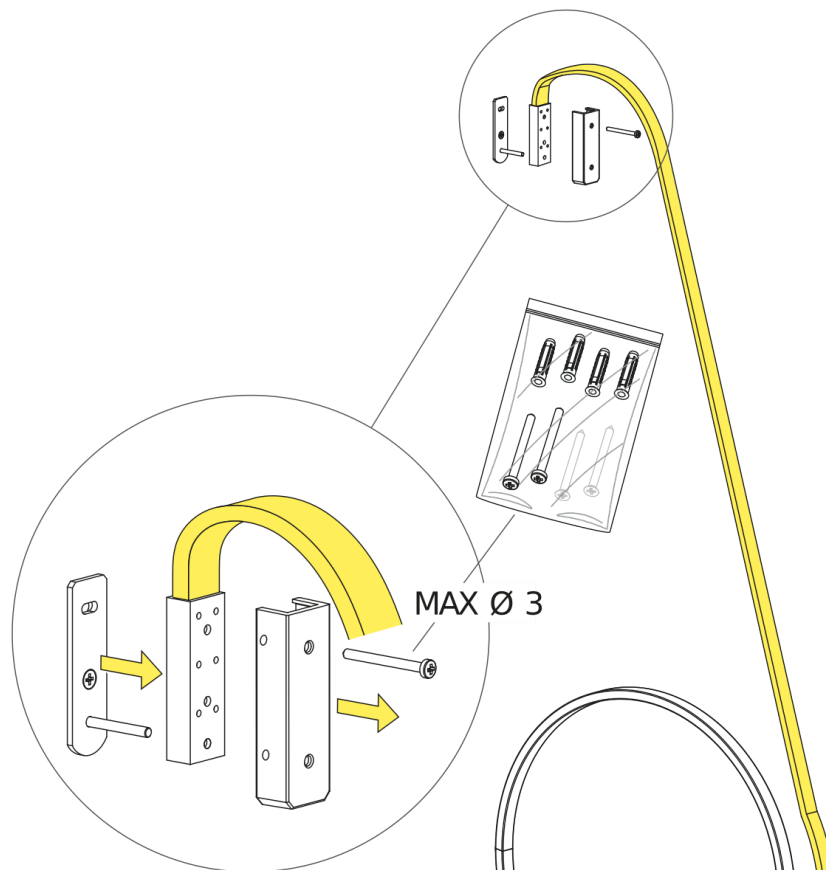


Fig.5

Unfasten the screws and remove the cover of the higher joint.

Pull the old cable out.

WARNING! When installing and whenever acting on the appliance, ensure that the power supply has been switched off.  
For the installation of the spare-part, it is necessary to consult a qualified electrician.

**RF26649**

Wiring Electrical mounting body assembly

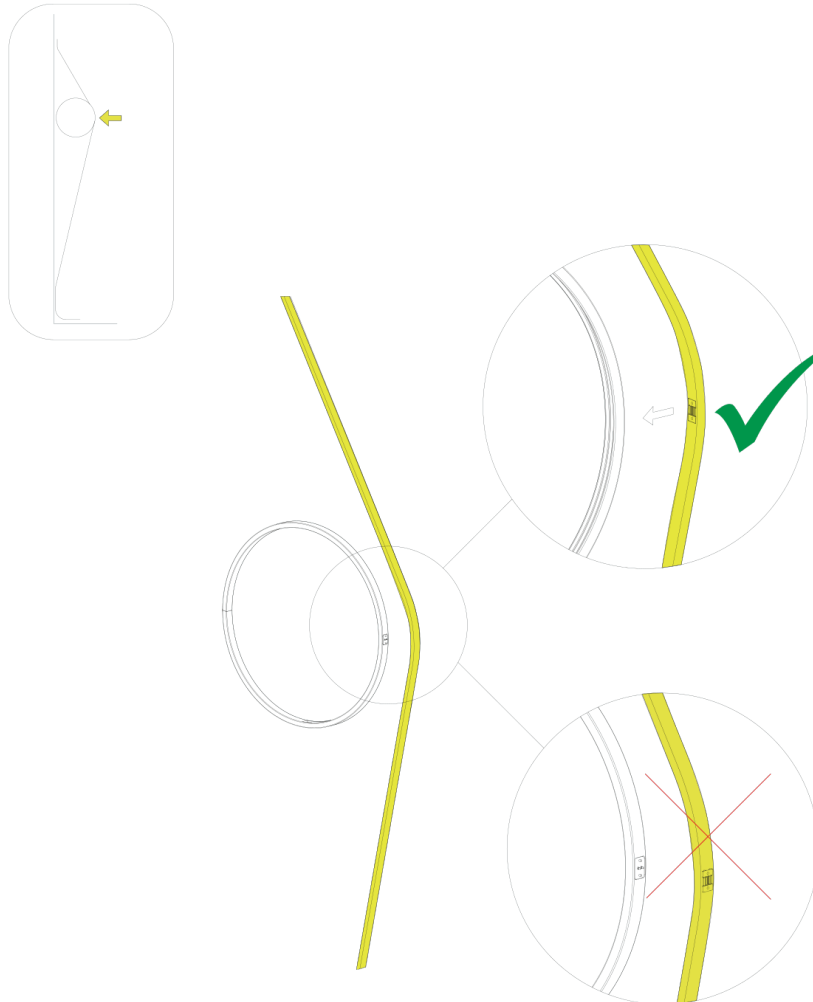


Fig.6

Connect the new body lamp to the ring respecting the correct installation direction.

WARNING! When installing and whenever acting on the appliance, ensure that the power supply has been switched off.  
For the installation of the spare-part, it is necessary to consult a qualified electrician.

**RF26649**

Wiring Electrical mounting body assembly

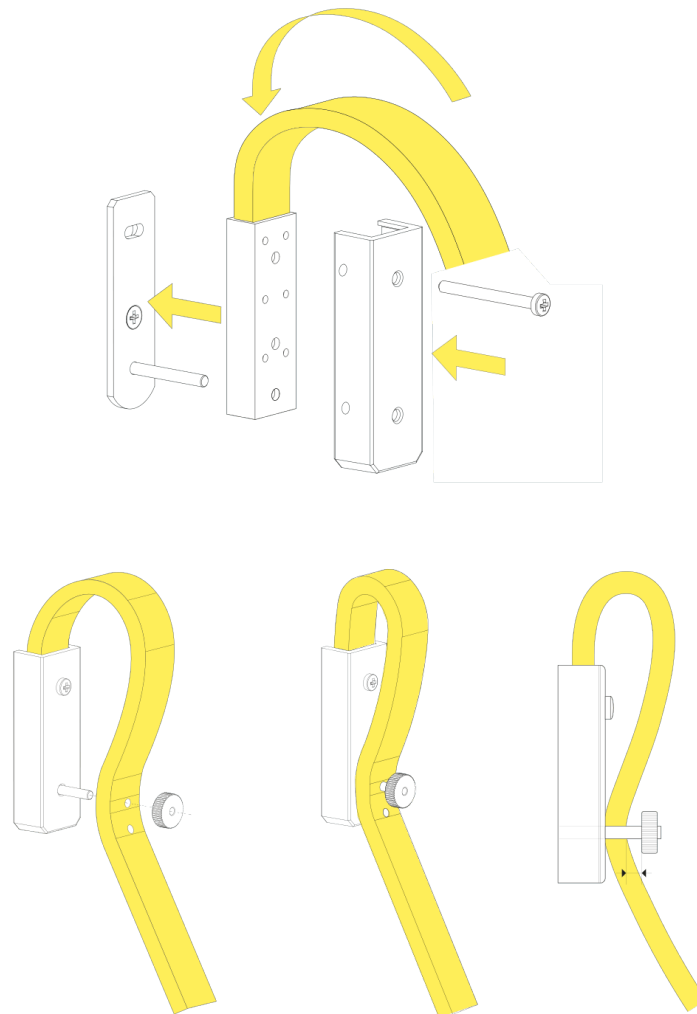


Fig.7

Insert the new body lamp. Fasten the screws, connect the ferrule and fix the cover of the higher joint.

WARNING! When installing and whenever acting on the appliance, ensure that the power supply has been switched off. For the installation of the spare-part, it is necessary to consult a qualified electrician.

# RF26649

## Wiring Electrical mounting body assembly

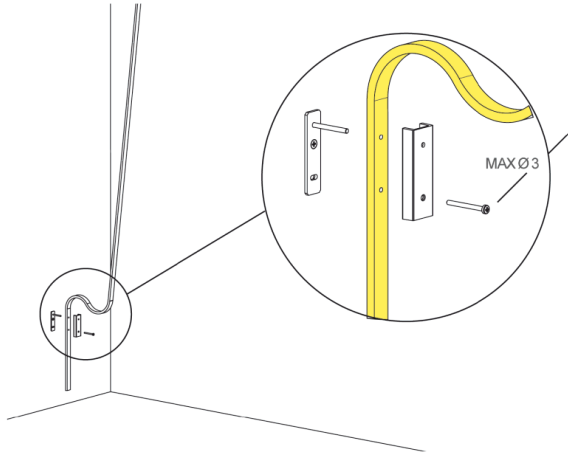


Fig.8

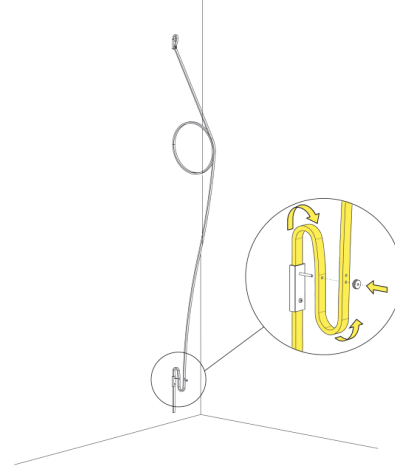


Fig.9

Position the new body lamp. Fasten the screws, connect the ferrule and fix the cover of the lower joint.

WARNING! When installing and whenever acting on the appliance, ensure that the power supply has been switched off.  
For the installation of the spare-part, it is necessary to consult a qualified electrician.

**RF26649**

## Wiring Electrical mounting body assembly

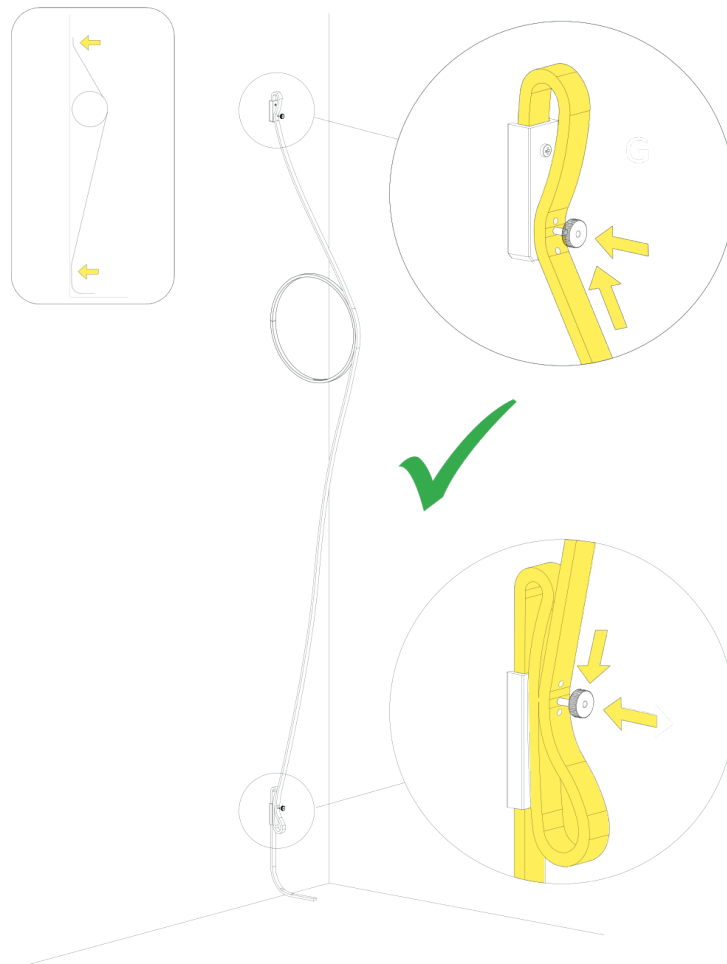


Fig.10

**ADJUSTING THE CABLE TENSION:** Pull the cable out of hole (C) then thread it through the pin (D) so as to increase its tension, then tighten the ferrule. If necessary, do the same at the bottom, moving the cable from hole (H) to hole (I); then tighten the ferrule.

Connect the plug of the new body lamp to the dimmer unit by rotating it 90° clockwise. (Fig.1 page 9)

**WARNING!** When installing and whenever acting on the appliance, ensure that the power supply has been switched off. For the installation of the spare-part, it is necessary to consult a qualified electrician.